

Not everything can keep going up

Not everything can keep going up

Most financial assets as well as gold are up for the year. As the Fed continues to taper its asset purchases, economic fundamentals will begin to matter more, in our view. If the economy behaves as we expect, stocks should show further gains, but bonds may lose ground. Emerging markets remain the major risk factor.

Asset Allocation changes

We are adjusting our allocations to large cap US equities to reflect more even weights between the style categories of growth and value. The two styles have become closely correlated and share many similarities, and we expect little difference in performance between them. We still favor growth over value within small caps. We also re-allocated our international equity weighting from emerging markets to developed markets.

Baby, it's cold outside

In this month's guest column, Rates Strategist David Woo examines the harsh winter weather of 2014 in the context of disruptions to the economy. He concludes that warmer weather, when it finally appears, is likely to be accompanied by rising US Treasury yields and a higher US dollar.



Research Investment Committee
MLPF&S

Martin Mauro
Fixed Income Strategist
MLPF&S

Cheryl Rowan
Portfolio Strategist
MLPF&S

Matthew Trapp, CFA
Investment Strategist
MLPF&S

Evan Richardson
Fixed Income Strategist
MLPF&S

[See Team Page for Full List of Contributors](#)



Click the image above to watch the video.

Table of Contents

Financial markets recap	2
Not everything can keep going up	3
What's your style?	7
The weather consensus	9
RIC themes for 2014	14
RIC asset class views	15
Fixed Income, Econ, Commodities, Currencies: views & risks	16
Global equity markets: views & risks	17
Asset allocation for individual investors	18
Portfolio of the month	24
Stock lists	25
Research portfolios and stock lists	27
Economic forecast summary	28
Interest rate forecast summary	29
FX rate forecast summary	29
Team Page	35

Financial markets recap

February review

Most financial markets saw gains in February, as investors became more comfortable taking risk.

Emerging Market equities, despite advancing 3.3% last month, remain in the red year-to-date.

Within US markets, equities more than recovered January's losses, with the S&P 500 index gaining 4.6% in February (+1.0% YTD).

Among size and style segments, the outperformance of large cap growth vs. value continued last month, while the reverse held true for small caps. Large cap growth remains in the lead year-to-date.

US sector performance last month was generally consistent with an uptick in risk appetite – cyclical sectors such as Materials (+6.9%), Discretionary (+6.2%) and Energy (+5.1%) outperformed the index while Health Care was the only defensive sector among the leaders with a 6.2 gain (+7.2% YTD, best of all sectors).

Within fixed income markets, sector performance reversed course last month, making for solid returns throughout most of the bond market. Fixed-rate preferreds returned 2.3% last month and continue to remain in the lead YTD.

In FX markets, the Euro appreciated 1.1%, while the Yen and US dollar both finished the month down 1.2%.

Gold (+6.6%) led all commodities last month, and has returned 10.0% YTD.

Table 1: Total returns (%)

Asset class	2013	As of 28 February 2014						
		1mo	3mo	12mo	YTD	3yr ²	5yr ²	10yr ²
Equity Indices (% , US dollar terms)								
S&P 500	32.4	4.6	3.5	25.4	1.0	14.4	23.0	7.2
NASDAQ Comp	40.1	5.1	6.4	38.1	3.4	17.1	27.0	8.8
FTSE 100	21.0	6.8	5.3	22.3	2.4	9.3	20.0	6.9
TOPIX	26.5	-0.6	-3.2	14.6	-4.2	3.0	11.3	3.6
Hang Seng	6.5	3.8	-4.4	2.7	-2.0	2.9	16.0	-
DJ Euro Stoxx 50	27.0	6.9	4.0	29.9	1.7	5.0	15.4	5.0
MSCI EAFE	23.3	5.6	2.9	19.8	1.3	7.1	18.1	7.1
MSCI Emerging Markets	-2.3	3.3	-4.7	-5.7	-3.4	-1.7	17.2	10.3
Size & Style (% , US dollar terms)								
Russell 2000	38.8	4.7	3.8	31.6	1.8	14.4	26.6	8.7
S&P 500 Citigroup Growth	32.8	5.2	4.9	28.7	2.1	15.8	23.1	7.7
S&P 500 Citigroup Value	32.0	3.8	2.0	21.9	-0.3	12.9	23.0	6.6
S&P 600 Citigroup Growth	42.7	4.3	1.3	33.0	0.0	17.3	28.7	10.7
S&P 600 Citigroup Value	40.0	4.6	2.4	31.6	0.8	16.5	27.4	9.6
S&P 500 Sectors (% , US dollar terms)								
Consumer Discretionary	43.1	6.2	2.3	33.8	0.0	21.4	32.9	9.3
Consumer Staples	26.1	3.6	-1.2	13.5	-1.7	15.8	19.0	9.1
Energy	25.1	5.1	1.5	13.9	-1.5	5.5	16.8	12.6
Financials	35.6	3.1	1.6	25.6	-0.6	10.8	25.7	-0.9
Health Care	41.5	6.2	8.1	39.3	7.2	24.8	23.5	8.7
Industrials	40.7	3.9	3.5	28.9	-0.7	14.4	27.7	8.5
Information Technology	28.4	4.6	6.2	28.4	2.0	13.2	24.2	7.4
Materials	25.6	6.9	6.9	25.3	2.0	9.0	23.2	8.4
Telecom Services	11.5	-1.0	-4.4	0.9	-4.2	10.5	14.7	7.0
Utilities	13.2	3.4	7.5	12.5	6.5	12.6	14.7	9.5
BofA Merrill Lynch Global Research Bond Indices (% , US dollar terms)								
10-Year Treasury	-7.8	0.5	1.6	-3.6	3.7	5.4	3.8	4.7
2-Year Treasury	0.3	0.1	0.2	0.5	0.3	0.8	1.2	2.5
TIPS	-9.4	0.4	1.1	-6.2	2.6	4.1	6.3	4.8
Municipals*	-2.9	1.3	3.3	-0.5	3.6	6.0	6.1	4.6
US Corporate Bonds	-1.5	1.1	2.7	1.4	2.9	6.0	9.8	5.4
US High Yield Bonds	7.4	2.0	3.3	8.4	2.8	8.8	18.9	8.6
Emerging Market Corporate Bonds	-0.5	2.1	2.3	1.1	2.0	6.4	13.4	7.0
Emerging Market Sovereign Bonds	-3.3	3.6	2.9	0.3	2.2	7.1	11.5	8.2
Preferreds	-1.6	2.3	4.0	1.7	5.6	5.8	19.0	2.1
Foreign exchange** (% , in local currencies)								
US dollar	6.4	-1.2	0.3	2.4	-0.1	3.2	-1.5	-1.0
British pound	1.7	0.4	1.9	9.2	1.5	2.0	1.7	-1.8
Euro	6.8	1.1	0.2	3.3	-0.9	0.7	-0.7	0.6
Yen	-18.9	-1.2	-0.3	-11.4	2.9	-7.0	-2.0	0.2
Commodities** (% , US dollar terms)								
CRB Index	-5.0	6.7	10.0	3.2	7.9	-5.0	7.4	1.4
Gold	-28.0	6.6	5.8	-16.0	10.0	-2.1	7.1	12.8
WTI Crude Oil	7.2	5.2	10.6	11.5	4.2	1.9	18.0	11.0
Brent Crude Oil	-0.3	2.5	-0.6	-2.1	-1.6	-0.8	18.7	13.0
Alternative Investments† (% , US dollar terms)								
Hedge Fund - CS Tremont ¹	9.7	-0.3	2.2	7.2	-0.3	4.5	8.4	6.2
Hedge Fund - HFRI Fund of Funds ¹	8.7	-0.5	1.7	5.9	-0.5	2.2	4.6	3.1

Notes: *Not tax adjusted. **BoE calculated effective FX indices. ¹Data lagged by one month; ²3yr, 5yr, and 10yr returns are annualized; CS AUM-weighted, HFRI equal-weighted; †AI data not comparable to other asset classes because of reporting delays, lack of standardized reporting, and survivorship and self-selection biases. Crude oil prices are spot USD. Source: S&P, MSCI, Bloomberg, FactSet, BofAML Bond Indices (US Treasury Current 10yr, Current 2yr, Inflation-Linked: Muni Master, US Corp Master, US HY Master II, EM Corp Plus Index; EM External Debt Sovereign Index; US Preferred Stock Index).

Martin Mauro
Fixed Income Strategist

Cheryl Rowan
Portfolio Strategist

Table 2: YTD returns (through March 7)

US Stocks	
S&P 500	2.0%
NASDAQ	4.1%
US Bonds	
Treasury	
10 Year	2.6%
30 Year	4.7%
High Yield	2.6%
Preferreds	5.7%
Emerging Markets	
MSCI Stocks	-3.3%
Corporate Bonds	1.6%
Sovereign Debt USD	2.2%
Sovereign Debt Local	-0.4%
\$ and commodities	
US \$	-0.4%
CRB Index	9.6%
Gold	11.1%
Oil	-1.6%

Source: BofA Merrill Lynch Global Research , Bloomberg

Not everything can keep going up

The year has been very good so far for assets spanning from gold, to bonds, to US and developed country stocks (see Table 2). While the markets favored relative safety in January – Treasuries up, stocks down – risk assets rebounded in February, and Treasuries added to their gains. We sit in early March with stocks at record highs, and the yield on high yield bonds 40 basis points above all-time lows. Looking globally, the major YTD losses largely have been contained to emerging market stocks and local currency sovereign debt, although both rose in February. If the economy behaves as we expect, stocks should show further gains, but bonds may lose ground. The emerging markets remain the major risk factor.

Will weather wither tapering?

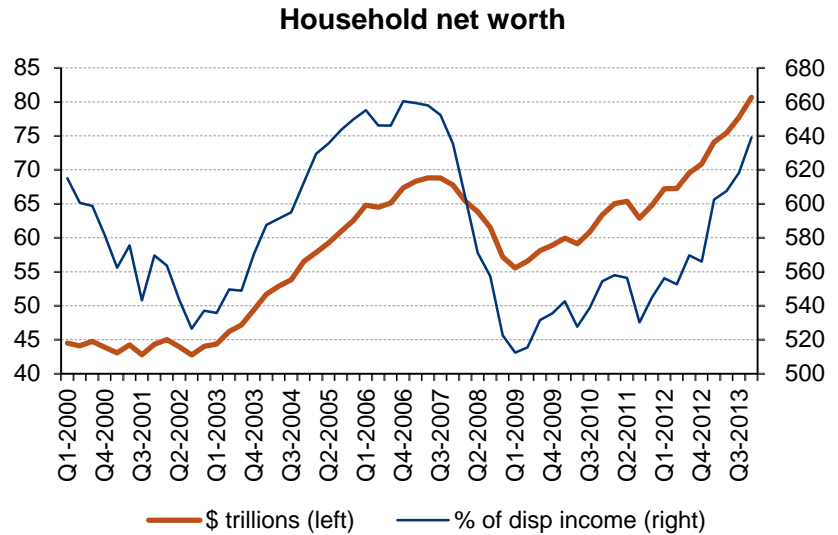
The ongoing liquidity injection from the Federal Reserve through its Quantitative Easing (QE) is a big contributor to this broad based strength, in our view.

Although the Fed has tapered its monthly asset purchases by \$20 billion, the present pace of \$65 billion translates to a still-hefty annual rate of \$780 billion. But as the Fed pares back further, economic fundamentals will begin to matter more.

The US economic data for the past couple of months have been mixed. The first readings for February – the ISM index and the employment report – both checked in a bit above market expectations, but still short of the pace from last autumn. The key question in the markets now is whether the recent spate of mixed US economic data are a simply a result of the harsh weather over much of the country, or if they signal a true slowing in the economy that will derail the tapering in Fed asset purchases.

Our call for better US growth is based in part upon the balance sheet repair over much of the economy. Household balance sheets in particular have improved thanks to the climb in the stock market, the revival in real estate, and some paring of debt. Chart 1 shows that household net worth climbed to a record high at the end of last year.

Chart 1: Wealthier households



Source: Federal Reserve Flow of Funds

In our view, the weather accounts for much of the weakness in the economic data. We expect the Fed to maintain its present pace of tapering, ending QE by December. In our guest column this month, head of global rates and currencies David Woo spells out the extent of the abnormal weather in recent months and the potential impact on the economic data. (See page 9.)

The economic data are not weak enough for the Fed to suspend its tapering.

Based on comments from Fed officials and testimony from Fed Chair Janet Yellen, winding down QE is the clear preference at the Fed. The Fed will probably announce another installment of tapering at the March 18-19 FOMC meeting. The Fed prefers to shift its focus to its “forward guidance” regarding short term rates. The FOMC has stated that it expects to keep the federal funds rate near zero until “well past the time” that the unemployment rate declines below 6.5%. The unemployment rate stood at 6.7% in February. The advantage of providing such guidance instead of QE is that the Fed could still contain yields, but without adding further to its balance sheet.

A winding down in QE in the face of a better economy would probably damage Treasuries most. Not only would they suffer directly from the reduction in purchases, but an improved economy would take away some of the flight-to-quality bid. For stocks, the improved prospects for revenues and profits would probably outweigh the negative consequences of the reduction in new liquidity. But Treasuries should retain their allure in times of geopolitical stress or if problems in emerging markets deepen. We turn to that next.

Emerging markets

The potential Fed tapering is one of at least three developments in the emerging markets sphere that raises market risks. The other two are the crisis in Ukraine, and the recent default of a solar power company in China, neither of which appear to be a large risk for now, but they bear watching.

A winding down in Fed purchases would probably curtail capital inflows into emerging markets

Tapering risks for EM

Emerging markets, particularly equities, would suffer the most from an end to QE, in our view. GEM Equity Strategist Ajay Kapur believes that the Fed’s QE

explains a large part of the enormous capital flows into EM countries in recent years. The decline in US yields drove investors to seek better returns in EM. As the Fed pulls back on its liquidity injections, EM countries face a potential outflow of liquidity. [The GEMs Inquirer: Pig in the python – the EM carry trade unwind 18 February 2014.](#)

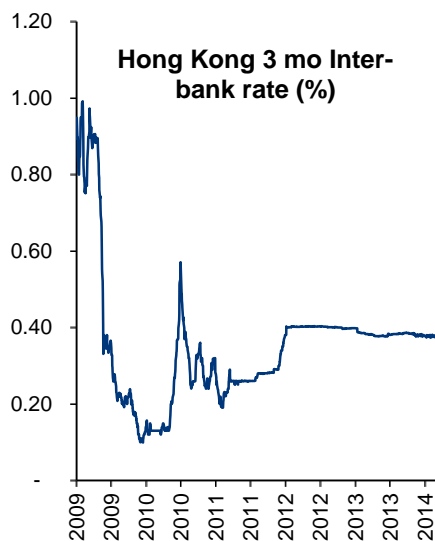
Alberto Ades, co-head of global economics and head of GEMs fixed income strategy and economics, notes that other factors contributed to the capital inflows in EM countries, but also sees the risk of higher rates as the Fed pulls back on QE. Yields in emerging markets are at levels that are hard to rationalize without help from low policy rates in developed countries. Higher rates that would come with stronger developed economies would probably push up EM rates and cause currencies to stabilize or weaken, although the market has already priced some of that in.

First default in China corporate bond market

The default on the bond interest payment by Chaori Solar may lead the market to re-assess Chinese subprime debt risk, in the view of China Strategist David Cui and his team. Credit Strategist Michele Barlow believes that defaults in other industries will follow. But the macro impact should be contained. Our economists note that the bonds are a modest part of China's capital markets, and that the Chinese government has both the resources and the will to intervene forcefully if contagion kicks in. [Global Economic Weekly: Sizing up the Chinese financial threat 07 March 2014](#)

The default in China comes amid worries of slowing economic growth in the country. Chief Investment Strategist Michael Hartnett believes that the Hong Kong interbank rate (HIBOR) would be one of the first indicators to signal possible financial problems in China. It is not flashing a warning sign now. (Chart 2 on the left.)

Chart 2: Calm China market



Source: Bloomberg

Ukraine tensions

The military tensions in the Ukraine have been defused for now, but risks remain. One important consequence of the conflict might be higher energy costs in Europe. Francisco Blanch, head of global commodities and derivatives research, notes that Russia supplies one-third of Europe's natural gas, with 55% of that flowing through the Ukraine. Yet, the Ukraine holds large shale gas reserves. With NATO military protection, European capital and American technology, the Ukraine could become a competitive supplier to European markets. Francisco does not see the risk of a spike in oil prices, unless a Black Sea disruption occurs. Not much Russian crude flows through the Ukraine, and Russia has little incentive to unilaterally cut oil exports.

The Crimean parliament has voted to join Russia, and on March 16, residents will vote on accepting this decision. Vladimir Osakovskiy, our Russia and CIS economist, believes that if the referendum to join Russia passes, the key for the markets would be whether Russia formally annexes the region or just takes effective control. The latter seems more likely and would probably have limited market impact. But formal inclusion of Crimea into Russia would raise the risk of economic sanctions from the US and Europe, and a harsh response in return from Russia. See [Russia and Ukraine Economic Watch: Crimea: Back to the USSR? 06 March 2014](#)

Bottom line

Our base case remains that US real GDP grows at 2.8% this year, and that stocks and low quality bonds outperform Treasuries.

We think stocks will move higher. Corporate earnings and sales are both growing at attractive rates and the stock market does not look overvalued to us, while sentiment remains muted.

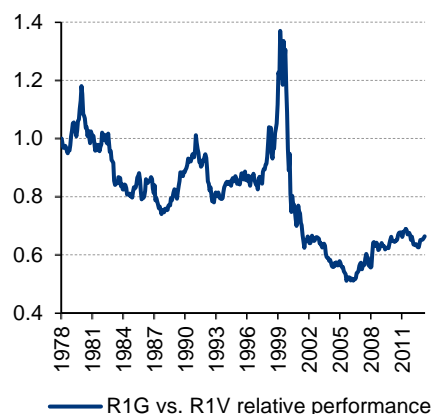
Within large cap stocks, we have no strong preference for either growth or value (see following page), but we prefer large caps over small caps and equities in developed markets over emerging. In the US, we favor global cyclicals and stocks with dividend growth potential.

Among bonds, a clear improvement in the economy and ongoing tapering in QE would probably do the most damage to Treasuries. High yield bonds, whose prices are less sensitive to rises in interest rates than most of the bond market, would probably suffer less than Treasuries, although yields there might still rise.

What's your style?

In this month's RIC, we are changing our asset allocation recommendations for large cap style to reflect more even distribution between the two main style categories of "growth" and "value" (please see Table 4 for details). Investors often expend great energy in allocating equity portfolios between the two, and an entire mutual fund sub-industry is built on this style platform. In addition, we reduced our allocation to Emerging Markets given our concerns about the impact that Fed tapering could have on those countries.

Chart 3: Relative performance of R1G vs R1V



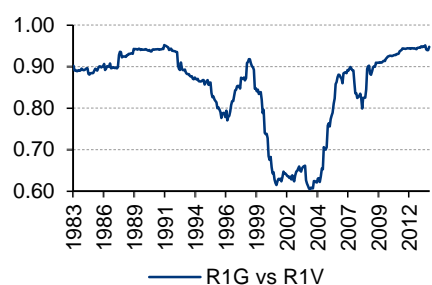
Source: BofA Merrill Lynch Global Research, Russell Investment Group

The classic adage is to "buy growth" when earnings growth is scarce and "buy value" when growth is plentiful. This is based on the assumption that value will usually be cheaper than growth, so there is no need to pay up for growth when profits are accelerating. The RIC had been favoring growth over value for precisely this reason. As the economy and profits struggled from the middle of the last decade until recently, growth outperformed value (Chart 3). Now, however, our US equity strategy team expects a modest recovery in profits, as flat nominal growth is boosted by a stronger economy and improving pensions. We therefore do not expect much of a performance differential between the two styles.

Growth and value have many similarities today

It is often recommended that investors own securities from both style categories to help diversify the overall portfolio and manage risk. Over time, many classic investment categories have become more closely correlated – US and non-US equities, large cap and small cap stocks, and also growth and value equities. In 2008, the rolling five-year correlation between large cap growth and large cap value stocks was around 0.80; today, it is around 0.95 (Chart 4) – meaning that growth and value are very closely correlated and including both in a portfolio does not meaningfully enhance diversification.

Chart 4: Rolling 5-Year correlations



Source: BofA Merrill Lynch Global Research, Russell Investment Group

Our US Equity Strategy team recently compared several metrics across large cap style categories, and across the Russell 1000 index, and found a number of similar qualities (Table 3). For example, both have similar market capitalizations, sensitivity to the US economy, percentage of high quality stocks and dividend growth rates. One would expect higher dividend yield for value stocks and higher non-US sales for growth stocks, but on most parameters measured, the two style indices are not that far apart.

Table 3: Russell 1000 Growth vs Russell 1000 Value

Weighted Average:	Russell 1000 Growth	Russell 1000 Value	Russell 1000
Market Cap (\$mn)	83,748	95,289	97,172
Dividend Yield	1.70%	2.40%	2.00%
Dividend Payout Ratio	35%	46%	41%
Dividend Growth (LTM YoY %)	16%	19%	17%
% Foreign Sales	25%	13%	19%
US GDP Beta	0.68	0.59	0.63
% High Quality (B+ or Better) stocks	46%	37%	41%

Note: All based on weighted average except for % of high quality stocks which is absolute %.

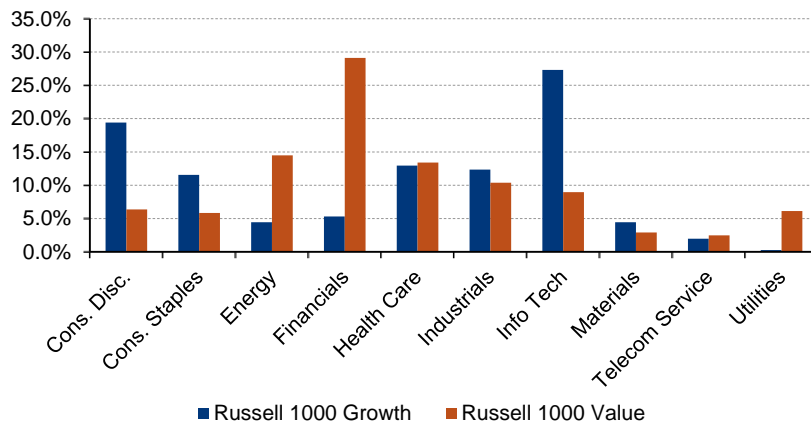
Source: BofA Merrill Lynch US Equity & US Quant Strategy, Russell, Compustat, WorldScope, S&P, BEA

Sector allocations important for investment goals

Shifting portfolio emphasis to either growth or value may depend more on the investor's goals than on any other consideration. While some market sectors such as Health Care, Industrials and Telecom Services have similar weights in both style indices, there remains a sector bias that has withstood the test of time (Chart 5). Growth indices are skewed toward Technology and Consumer

Discretionary, where historical earnings growth rates have been robust, while Value indices show a striking preference for Financials and Energy – where price-to-book values are attractive.

Chart 5: Russell 1000 Growth and Russell 1000 Value sector weights



Source: BofAML Global Research, Russell Investment Group

Growth still favored among small caps

We maintain our growth style bias among small cap stocks, as Small Cap Strategist Steven DeSanctis continues to favor growth over value. Small cap growth continues to outperform small cap value and it remains cheaper, but relative valuations have become less attractive along with this outperformance. Steven currently overweights Technology and Industrials, which are much larger constituent sectors of small cap growth indices. Further, improved performance from global cyclical favors growth over value among small cap stocks.

Asset allocation change details

The RIC has removed our growth bias in the large cap style equity allocation. For US investors with Tier 0 liquidity and a moderate risk profile, we reduced the Large Cap Growth weight by 4% to 26% and increased the Large Cap Value weight by 4% to 26%.

The RIC also reduced the equity weight for International: Emerging by 1%, which now puts EM in line with the strategic weight at 2%, for a moderate risk profile and Tier 0 liquidity. Emerging markets would suffer the most from an end to QE, in our view. In a corresponding move, we increased International: Developed by 1%, taking its weight up to 11%.

Table 4: RIC asset allocation changes for US clients with a Tier 0 liquidity profile

	Conservative			Moderately Conservative			Moderate			Moderately Aggressive			Aggressive		
	Previous	New	Diff.	Previous	New	Diff.	Previous	New	Diff.	Previous	New	Diff.	Previous	New	Diff.
Stocks	24%	24%	0%	45%	45%	0%	68%	68%	0%	80%	80%	0%	88%	88%	0%
Large Cap Growth	10%	9%	-1%	20%	18%	-2%	29%	26%	-3%	32%	29%	-3%	32%	28%	-4%
Large Cap Value	12%	13%	1%	16%	18%	2%	23%	26%	3%	25%	28%	3%	21%	25%	4%
Small Growth	0%	0%	0%	2%	2%	0%	2%	2%	0%	3%	3%	0%	6%	6%	0%
Small Value	0%	0%	0%	1%	1%	0%	1%	1%	0%	2%	2%	0%	5%	5%	0%
International: Developed	1%	1%	0%	4%	5%	1%	10%	11%	1%	13%	14%	1%	19%	20%	1%
International: Emerging	1%	1%	0%	2%	1%	-1%	3%	2%	-1%	5%	4%	-1%	5%	4%	-1%

Source: BofA Merrill Lynch Global Research

David Woo
FX and Rates Strategist

Differing views about the effect of bad weather on the economic data have been a big driver of market movements.

The weather consensus

The vigorous rally of S&P 500 in the face of steadily mixed US data since early February (Chart 6) can only mean one thing, in our view – the weather hypothesis has now taken hold in the market. An informal survey we conducted suggests that most market participants believe that poor weather has been behind three-quarters of the weak data since the second week of January.

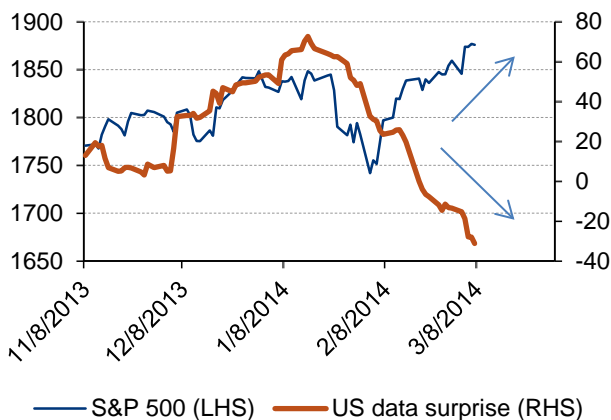
At the same time, many investors think that if it turns out that there is more to the soft data than the weather, the Fed can always be counted on to slow down the pace of tapering. This latter line of thinking is probably why, in the weeks prior to the release of the jobs report for February, the S&P 500 and 10-year Treasury yields parted ways, with the former making a new record high while 10-year Treasury yields trading in a tight range some 20bp below its own year-high (Chart 7). The jobs report pushed Treasury yields higher as investors became more confident that tapering will continue at the March 18-19 FOMC meeting.

This divergence suggests to us that US rates (and the USD by extension) have much at stake in how the weather story will play out. If the weather hypothesis turns out to be correct and data begin to improve with the weather, Treasury yields and the USD have to go up a lot just to play catch-up with stocks. This is why we continue to believe there is nothing more important than US weather for the outlook for the rates and FX markets over the next four to six weeks. To us, understanding the weather deeply has never been more important than right now.

This report seeks to answer three key weather-related questions right now:

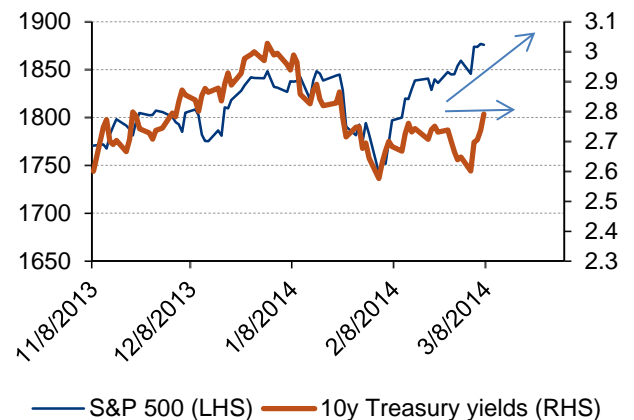
- How bad is this winter in historical context? The answer to this question may help us assess how much of the weak data can be attributed to the weather.
- In the case of similarly severe winters in the past, how did the data behave during the weather disruptions and afterward? The answer to this question may help investors position for any turning points in the data.
- How much longer is the severe weather likely to drag on? This is the most difficult, even though obviously the most crucial, question.

Chart 6: S&P 500 and US data surprise



Source: BofA Merrill Lynch Global Research

Chart 7: S&P 500 and 10y Treasury yields (%)



Source: BofA Merrill Lynch Global Research

“On average” weather data do not look severe, but certain areas have seen extreme cold and extreme precipitation.

2014 in historical context

So how bad has this winter been in the US? Ironically, the data at first glance do not suggest that it has been especially severe. Notwithstanding reports of extreme cold in many regions, average temperature across the country was 30.34 degrees (F) in January – lower than the last two Januaries, but in line with the average since 2007. If winter weather disruptions are about the quantity of snow, average precipitation across the country was only 1.32 inches in January – the lowest since 2003. In other words, on average, this winter has neither been especially cold nor had particularly a lot of snow.

However, this has not been an average year by any stretch of the imagination. What the average numbers do not show are the extremities across different regions. To quantify these extremities and to place the severity of this winter in a historical context, we have developed an Extreme Winter Weather (EWW) index using state level data going back to 1960.

The EWW index has three sub-components:

- **Extreme cold:** We define this as the difference between the number of US states whose temperature over the month was at least one standard deviation below its historical average and the number of cold states¹ whose temperature was at least one standard deviation above its historical average.
- **Extreme precipitation:** We define this as the difference between the number of states with freezing temperature whose precipitation over the month was at least one standard deviation above its historical average and the number of states with freezing temperature whose precipitation was at least one standard deviation below its historical average.
- **Extreme snow storms:** We define this as the number of snow storms that fall in the top 50 of the most severe storms since 1953, weighted by its NESIS score.²

Each sub-component of the EWW is calculated as a z-score. Given we do not have full-month temperature and precipitation data for February yet, the first two sub-components use only the December and January data while the extreme snow storm component includes all the storms from December to February. Below are the key results:

- December and January were extremely cold, with the number of unusually cold states far outstripping the number of unusually warm states. According to this measure, *the 2013 winter is the 10th coldest winter since 1960 and the second coldest since 1984*. This is even before we take into account an extremely cold February.
- Our measure of extreme precipitation shows this winter to be in line with the

¹ Cold states are defined as the 40 states with lower temperatures than the remaining 10 (which we call warm states). We are assuming that if Minnesota has a particularly warm winter it will have a better impact on economic activities than if Florida has a particularly a warm winter.

² The Northeast Snowfall Impact Scale (NESIS) developed by Paul Kocin and Louis Uccellini of the National Weather Service (Kocin and Uccellini, 2004) characterizes and ranks high-impact Northeast snowstorms. These storms have large areas of 10 inch snowfall accumulations and greater. NESIS has five categories: Extreme, Crippling, Major, Significant, and Notable. The index differs from other meteorological indices in that it uses population information in addition to meteorological measurements. Thus, NESIS gives an indication of a storm's societal impacts. This scale was developed because of the impact Northeast snowstorms can have on the rest of the country in terms of transportation and economic impact.

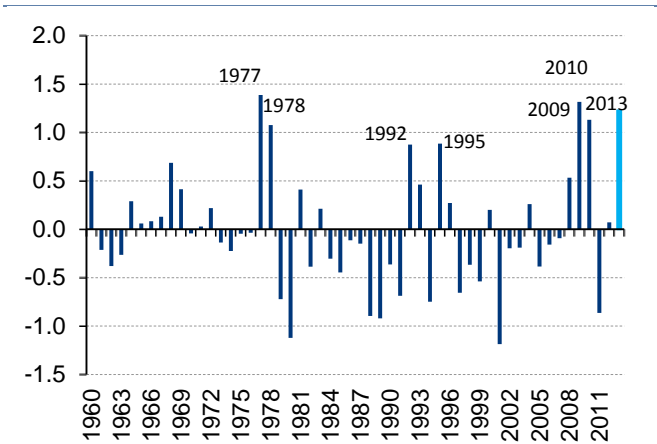
historical norm but more moderate than seven of the last 10 winters. We certainly cannot blame the negative data on precipitation.

- This winter has been notable for the severity and frequency of the snowstorms in the Northeast. Indeed, since December, the Northeast has been pummeled by five of the 50 biggest snow storms to hit the country since 1956. This is why the 2013 winter so far is ranked third since 1960 in our definition of extreme snowstorms, just behind 2009 and 2010.

What happens when we combine these three sub-components into a single index? For simplicity, we give equal weights to the three sub-components so that the total index is just an average of their respective z-scores. *According to this index, this winter is the third most severe winter since 1960, just behind 1977 and 2009 (Chart 8).*

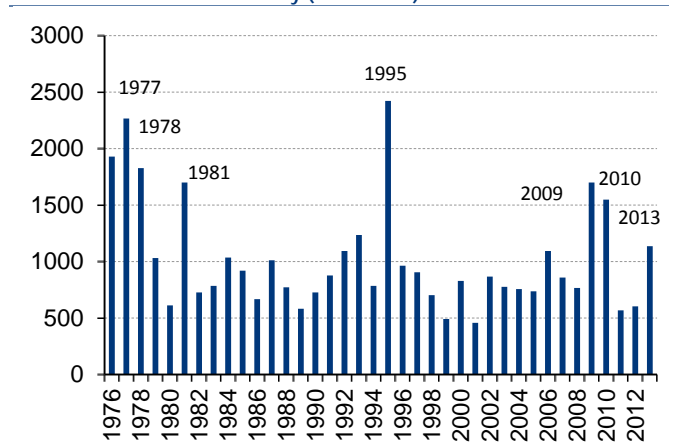
To make sure that our EWW index is useful not only in identifying extreme weather conditions, but also extreme economic disruptions, we compare it with the number of people who said they were not at work due to the weather between December and February every year (Chart 9). This comparison shows that most of the years that are ranked highly in the EWW index also happened to be the years with greatest number of people whose ability to go to work was affected by the weather (1977, 1978, 1995, 2009 and 2010). This important finding and the fact that the EWW index suggests this winter is the third most severe winter in 50 years strengthen our view that weather has been behind most of the deterioration of the US data of late.

Chart 8: BAML extreme winter weather (EWW) index



Source: BofA Merrill Lynch Global Research

Chart 9: Number of people who said they were not at work due to weather in December-February (thousands)



Source: BofA Merrill Lynch Global Research

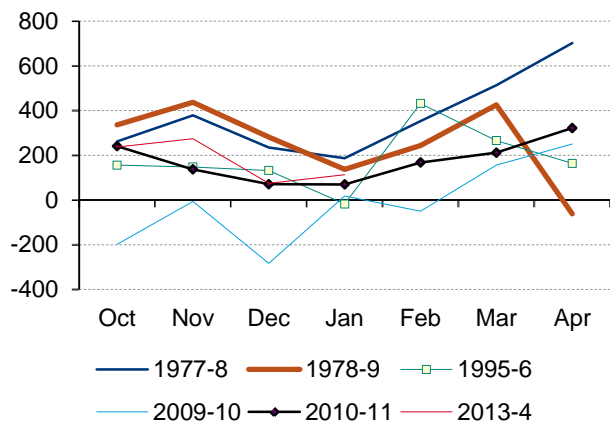
Common themes among cold winters

Our view is that the recent slowdown in the US economy was weather driven and therefore likely to be temporary. For investors who share our view and want to position for higher US rates and higher USD, the million-dollar question right now is when the data will turn. We believe that the data will only turn once the weather begins to improve. While in the next section we will discuss the weather outlook in March, we will focus in this section on the key lessons from previous winters with severe weather conditions and significant economic disruptions.

We focus on 1977, 1978, 1995, 2009 and 2010, winters that rank highly in our EWW index as well as having the greatest number of people out of work due to weather. Charts 10-13 show the evolution of nonfarm payrolls, car sales, existing home sales, and the new order component of the ISM survey from October to April associated with each of these winters. The key lessons are:

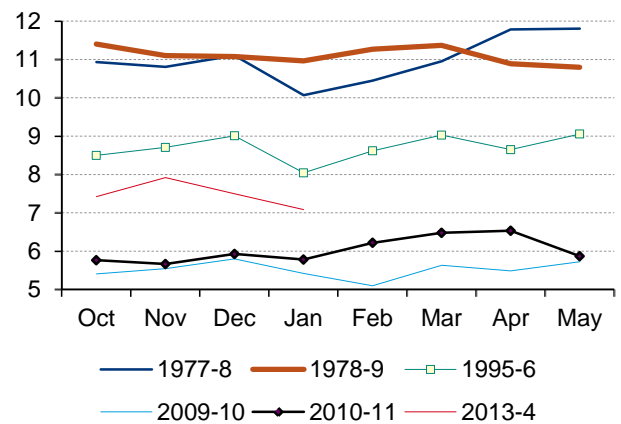
- For all these benchmark winters, nonfarm payrolls and car sales *showed improvement in the subsequent March*, and with the exception of the winter of 2009-10, they *already showed improvement in February*. We cannot rule out that this year may resemble more 2009-10 as both years saw a high number of severe snowstorms in the first half of February.
- There is *much less consistency in the evolution of existing home sales or ISM manufacturing survey* for these benchmark winters. For the former, it would appear that the recovery usually began only in March. For the latter, the lack of consistency across all the winter months leads us to conclude that weather is not a key driver. By the way, none of the benchmark years exhibits the same precipitous drop as in January this year.

Chart 10: Changes in nonfarm payroll (thousands)



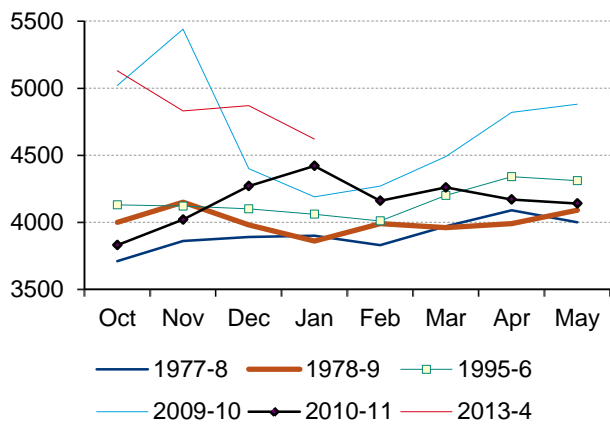
Source: BofA Merrill Lynch Global Research

Chart 11: Car sales (SA)



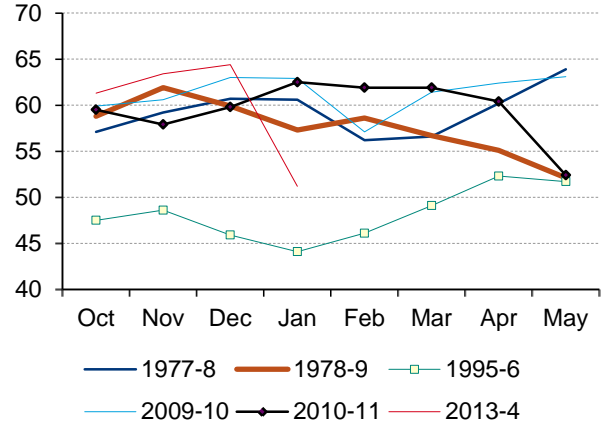
Source: BofA Merrill Lynch Global Research

Chart 12: Existing home sales



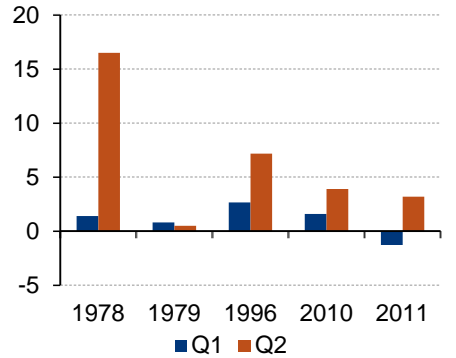
Source: BofA Merrill Lynch Global Research

Chart 13: ISM manufacturing, new orders



Source: BofA Merrill Lynch Global Research

Chart 14: GDP growth (Q/Q, SA, AR)



Source: BofA Merrill Lynch Global Research

- In four of our five benchmark years, GDP growth accelerated in the spring (Chart 14), with the average difference between 1Q and 2Q GDP growth of 5pp. Although this was distorted by the 1978 winter, 2Q GDP growth was more than 2pp higher than 1Q growth following both the winters of 2009 and 2010.
- Treasury yields tend to follow US data. Therefore, it is unsurprising that in all five of our benchmark winters, 10-year Treasury yields rose in February and, with only the exception of 2009-10, rose again in March. Of those years, Treasury yields rose the most in the spring of 2006, when the pick-up in the leading indicator was the most pronounced, and the least in the spring of 2011 (Treasuries had sold off aggressively late 2010 due to a combination of QE2 and fiscal easing). However, by April, yields went up again in only three out of the five years.
- USD/JPY tracked Treasury yields higher in March in both 1996 and 2010. If we are correct in our assessment that this year most resembles the winter of 2009-10, then USD/JPY could have a 5 big figure upside in March if history were to repeat itself.

RIC themes for 2014

Here are the themes for 2014 that the RIC introduced in the [Year Ahead RIC report in December](#).

Table 5: RIC themes for 2014

Theme	Rationale	Idea
1. Be an owner, not a lender	Fed tapering with accompanying higher interest rates, an improving US economy, and healthy earnings and sales growth all favor stocks over bonds.	Buy US equities, particularly large caps with reasonable earnings and dividends growth. Consider closed-end equity funds that trade at a discount.
2. Cash is trash, but high yield is not junk	High yield bonds and senior loans will be among the best performing sectors of the bond market in 2014, in our view, while returns on money market funds and other short-term assets should remain near zero until early 2016.	Reinvest cash not needed for liquidity purposes. Invest in high yield bonds and senior loans funds (not recommended for conservative investors).
3. Pick stocks, not markets	Falling correlations among individual equities suggest divergent returns and an environment that favors stock selection over indexing.	Add actively managed funds; employ specific stock selection methodologies.
4. Bigger is better	Small caps outperformed large caps in 2013, but are now expensive and not expected to outperform large when global growth accelerates.	Evaluate allocation to small caps in relation to portfolio. Within the small cap space, we prefer larger market caps, higher quality, and Industrials over Consumer.
5. Look after tax, not before tax	For most investors, even those not in the top tax brackets, yields on municipal bonds are higher than the after-tax yield on other bonds.	Ladder municipals in maturities out to 15 years in a diversified portfolio. Avoid long-duration funds or leveraged muni closed end funds.
6. Warehouses over townhouses	We may be in the early stages of an equity market leadership shift away from consumer-related sectors and toward industrials and global cyclical.	Look for stocks or ETFs in areas of the market such as Industrials, Energy, Technology, and Materials.
7. Ride the curve	We recommend some exposure to intermediate-term maturities, primarily through portfolio laddering, even though we expect yields to rise.	Ladder maturities from one to 10 years in the taxable market and one to 15 years in munis.
8. Find the next Google	In our view, some of the best equity themes can be found among innovative companies that benefit from their investments in technology.	Add innovation theme-based stocks to equity portfolios. Look for theme-based managed products.
9. Look across the pond	European recovery is only just beginning, in our view, and the region is poised for a longer and more sustainable rally in the equity market in 2014.	Add European stocks, ETFs to portfolios. Add exposure to US Industrials, which have the highest correlation to the Euro Stoxx index.
10. Don't get real	We expect a modest decline in a broad array of commodity prices in 2014, caused by Fed tapering, higher US rates, a stronger dollar, slowing economic growth in China, and oversupply.	Underweight commodities and commodity funds. Emphasize metals like palladium, platinum, if possible.

Source: BofA Merrill Lynch Global Research

RIC asset class views

Table 6: Research Investment Committee asset class views

Asset Class	RIC view (+ / = / -)	Comments
Equity markets		
US equities	+	Revenue growth better - should support earnings. Low but rising rates, low inflation & improving economy sweet spot for stocks.
Consumer Discretionary	-	Rising rates favor saving over spending and may slow down housing recovery; expensive by all measures and EPS at risk.
Consumer Staples	=	Best defensive sector with high quality, good yield and div growth plus higher non-US exposure and less govt. risk.
Energy	+	Beneficiary of global growth and US energy independence; under-owned, but large cap oils struggling with EPS growth.
Financials	=	Easy returns are likely over, but should benefit from US economic and housing recoveries; balance sheets improved.
Healthcare	=	Best performing sector YTD; HC reform favors hospitals, managed care, PBMs; pharma best yield play.
Industrials	+	Benefits from cyclical recovery, especially Europe. Capex trends getting better. US manufacturing well positioned.
Info Technology	+	Benefits from improving cyclical and secular growth; cash return strategies, non-US exposure, good EPS growth are positives.
Materials	=	Benefits from improving global growth; risk of lower China growth and commodity prices as inflation remains low.
Telecom	-	Best dividend yield sector, but not much room for dividend growth as payout ratios high; poor risk/reward trade-off.
Utilities	-	High payout ratios and low EPS growth keep us UW; dividend yields still above Treasuries, but rising rates narrow that gap.
Growth	=	As earnings growth becomes more broad-based, PMs less likely to pay up for growth; indices favor Tech/Industrials.
Value	=	Should do better as profits accelerate; good dividend growth here; favor Energy within value indices.
Small cap	-	Absolute and relative valuations at extreme levels, earnings expected to decline; favor higher quality, growth over value.
Large cap	+	Beneficiaries of fund flows into US equities/ETFs; attractively valued, better EPS growth among midcaps.
Europe (ex. UK)	+	PMIs suggest recovery continues, but EPS guidance is lower, valuation stretched; flows may slow; favor defensives/lower beta.
United Kingdom	=	Strong growth continues, esp. business investment, QE and rates "on hold" at BOE.
Japan	+	More BOJ asset purchases, easing, wage hikes offset consumption tax increase; P/Es expanding; like defensives, tech, autos.
Asia Pac (ex. Japan)	-	Challenges are higher US yields, dollar; weaker op margins, falling commod. prices, China trust/debt rollover cycle.
Emerging markets	=	QE debt-driven carry trade unwind weighs on EM; indicators not at "buy" yet for Asia or Russia; Latam earnings ests falling.
Fixed income markets		
Treasuries	-	Yields are likely to rise in 2014, mostly in the five year and longer range.
Agencies / MBS	-	Fed tapering and policy risks argue for a defensive positioning for now.
TIPS	=	Inflation protection desirable, even though yields are low.
US IG Corporates	+	Preferable to Treasuries for conservative investors. We favor lower quality, and intermediate maturities.
US HY Corporates	+	Duration is lower than in other sectors, spreads are likely to narrow, but yields could rise.
Preferred securities	=	Favor high coupons, and fixed-to-floating structures.
Non-US DM Sovereigns	-	Yields are low, and currency translation should work against \$-based investors.
EM \$ Sovereigns	=	Risks from rising US Treasury yields and slowing growth in EM nations.
EM local crncy Sovereigns	-	Same risks as for \$ denominated, plus near-term risk of weaker currencies.
Gold	-	Higher interest rates, a stronger \$ and weaker commodity prices could result in an average price of \$1,150/oz in 2014.
Oil	-	Increases in production should keep prices soft.
US dollar	+	Greenback should strengthen against most developed and EM currencies.

Source: BofA Merrill Lynch Research Investment Committee

Notes to RIC views

Ratings designations are as follows: (+) favorable view; (=) neutral view; (-) unfavorable view. Ratings reflect the Research Investment Committee's view for an investment time horizon of 12 months. Typically, the RIC view will agree with regional/product strategists, but at times there may a difference of opinion based on investor suitability or time frame.

Fixed Income, Econ, Commodities, Currencies: views & risks

Table 7: Regional Strategist views & associated risks

Views	Risks
Global Economics (Ethan Harris, Alberto Ades)	
<ul style="list-style-type: none"> ■ US growth is likely to strengthen in 2014 while the Fed tapers slowly. ■ The largest developed economies are likely to expand at above-trend pace. ■ EM is likely to benefit from stronger global growth and accommodative DM policy. 	<ul style="list-style-type: none"> ■ Downside risks: US capex softness, Chinese financial crisis and weak corporate investment in Japan. ■ Upside risks: stronger US labor market recovery, faster EM growth.
Global Rates (Priya Misra, Ralf Preusser)	
<ul style="list-style-type: none"> ■ US: We maintain our medium term shorts while turning cautious in the near term. Improving growth as the fiscal drag fades, diminished downside risks, declining demand and deteriorating credibility of forward guidance argue for higher rates in 2014. In the near term weakness in equity markets, short positioning in rates and a softening of data given the cold weather are risks. ■ Europe: Into 2014, Fed tapering should warrant a slow rise in yields, while an accommodative ECB will keep curves steep. The periphery will perform well as a carry trades as long as deflation does not become entrenched. 	<ul style="list-style-type: none"> ■ US: An unexpected growth shock in 2014 either due to tighter financial conditions or weaker EM growth or a stock market correction is a risk to much lower rates as the market is biased short. Our latest client survey indicates that very few investors expect 10y rates below 2.6%. ■ Europe: The ECB has signaled that they are willing to look through near term volatility in inflation, which coupled with the German constitutional court ruling on the ECB's OMT could raise volatility in the periphery and expose the curve to flattening risks.
Global Commodities (Francisco Blanch)	
<ul style="list-style-type: none"> ■ We hold a moderately negative stance on commodity prices this year as a strong trade-weighted USD and sluggish nominal GDP growth will likely cap the upside to dollar-denominated commodity prices. ■ Many commodity markets are moving from a relatively balanced to a slightly oversupplied market this year, particularly oil, US natural gas and copper, in our view. ■ Gold prices continue to be challenged by rising interest rates and a stronger USD. We believe gold could fall back below \$1,200/oz as immediate concerns over the US and EM subside through 2Q14, and expect prices to bottom later this year as concerns of unexpected inflation attract some buyers. 	<ul style="list-style-type: none"> ■ The potential return of Libyan and Iranian oil could significantly exacerbate surpluses, triggering additional downside in oil prices. ■ Oil may briefly jump by \$10/bbl or more if the 1 about 1 million b/d of Russian oil flowing through the Black Sea is temporarily disrupted. ■ A reacceleration of global growth is not bearish industrial metals, but upside may be limited on persistent EM headwinds. Supply-constrained commodities like zinc and platinum could outperform.
Global Credit (Michael Contopoulos, Hans Mikkelsen)	
<ul style="list-style-type: none"> ■ Longer-term outlook for corporate credit spreads remains positive. We remain overweight IG and HY corporate spreads relative to governments, and favor US HY and European IG over US IG. ■ Short term macro risks, such as China and the US fiscal situation, have faded. Rising interest rates, and the circumstances leading to that, are typically positive for credit spreads. However, we believe interest rates will increase too rapidly at times and lead to periods of wider credit spreads. 	<ul style="list-style-type: none"> ■ The biggest risk to US IG is the possibility of wider credit spreads following fund outflows and institutional repositioning, should interest rates rise rapidly again. ■ HY has capacity to offset some further interest rate increases, but that would change if rates rise by more than a nominal amount and very quickly. ■ We look for companies to add leverage to the detriment of bondholders, especially in the higher quality industrial segment.
Municipals (Municipal Strategy Group)	
<ul style="list-style-type: none"> ■ Puerto Rico has announced that it will sell \$3bn GO bonds on 11 March. In the GDB's Special Liquidity Update, the GDB estimates that it should have sufficient liquidity to sustain a positive cash balance through FY2015. ■ While the headlines have gone to troubled credits like Detroit and Chicago, the credit quality of the muni sector remains very high. Moody's has removed its negative outlook for states and local governments and is now neutral. State tax revenues are now increasing rapidly as the economy grows faster. ■ The decision in the Detroit bankruptcy case to the effect that state law cannot protect labor contracts in bankruptcy should lead to fewer bankruptcy filings as debtors are incented to negotiate outside of court. 	<ul style="list-style-type: none"> ■ Rising interest rates pose a challenge for investment strategies. Higher yields offer the opportunity to lock in tax exempt yields of 100% of treasuries or more. ■ We view the risk of tax reform as remote, but expect a continuing discussion about it in Washington. ■ Muni defaults in 2014 should continue to decline as tax revenues rise at both the state and local level.
Global FX (David Woo, Alberto Ades)	
<ul style="list-style-type: none"> ■ Look for the USD to strengthen against G10 on eventual Fed tapering, US energy discoveries, and chronic European weakness, with further downside to risky and commodity currencies. ■ We continue to expect EUR-USD lower medium term, with an end 2014 target of 1.25. We maintain our USD-JPY target to 108 for year-end 2014. ■ Growth concerns are the likely culprit behind the turmoil in EM. We await further signals from China and largely avoid USD exposure. MXN and KRW could outperform, though on a relative basis. 	<ul style="list-style-type: none"> ■ A downside surprise to US inflation, which has already been persistently low, would push off Fed tapering, lowering USD in the process. ■ USD-JPY has upside risk from domestic investors selling yen in Japan or positive macro shocks in the US that would increase growth and yields. ■ Tighter liquidity or credit concerns in China remain the main risk for EM currencies.

Source: BofA Merrill Lynch Research Investment Committee

Global equity markets: views & risks

Table 8: Regional Strategist views & associated risks

Views	Risks
Global Equities (Michael Hartnett)	
<ul style="list-style-type: none"> ■ The MSCI All-Country World Index year-end 2014 target is 444. We are bullish growth, bullish stocks, bullish the US dollar, and bearish rates. ■ The investment regime will change from High Liquidity & Low Growth to Higher Growth & Lower Liquidity. ■ The keys for US "escape velocity" continue to strengthen. Real Estate prices remain robust, bank lending is accelerating, and small business confidence continues to strengthen. ■ Bull markets do not end with high investor and corporate cash and policy makers in "whatever it takes" mode. 	<ul style="list-style-type: none"> ■ An era of unprecedented intervention in financial markets may threaten a parabolic overshoot in some asset prices. ■ EM pessimism driven by bond/FX carnage, a China slowdown/trust default, and EPS recession concerns could hurt developed market sentiment and risk assets.
United States (Savita Subramanian)	
<ul style="list-style-type: none"> ■ 2014 year-end S&P 500 target is 2000, which is 17x our 2014 EPS of \$118. ■ In the short-term, as global growth improves and interest rates rise, we prefer half-growth/half-yield stocks, self-help stories, multinationals, and GDP-sensitive stocks. For the longer term, we recommend investors "do the opposite" of what worked for the last 30 years and buy large, high quality cash-rich US stocks. ■ Sector preferences: OW Tech, Industrials & Energy. UW Utilities, Telecom Services & Cons. Disc. 	<ul style="list-style-type: none"> ■ Corporations continue to hoard their cash, no bottom in China growth, reemergence of tail risks from Europe, US economic growth does not reaccelerate, global recession. ■ The path to 2000 may not be a straight line; 5% pullbacks happen on average 3x per year. ■ Continued downside in EM could put pressure on the more crowded US stocks with EM exposure. Fortunately, most have been shed by active managers over the last few years, so downside may be limited.
Europe (John Bilton)	
<ul style="list-style-type: none"> ■ We see 10-15% total returns from European indices in 2014 with a FY14 target on SX5E of 3400 and 7400 on FTSE 100; we anticipate a period of consolidation in 1H14 before re-acceleration in 2H14. ■ Our target is driven entirely from EPS growth, and we see little scope for further rerating in 2014. EPS growth of 12% is driven largely from operating leverage as EU margins recover. ■ We believe three themes dominate in 2014 – cash return/dividend growth, operating leverage, and macro stabilization. ■ European Strategic sector preferences: OW Pharma, Energy, Banks, Aerospace, Food Retail; UW Cap goods, Chems, Autos, PHH. Within Banks – we prefer Pan-EU banks over Euro-area banks. 	<p>Downside risks</p> <ul style="list-style-type: none"> ■ Further euro area disinflation (especially HICP <1% beyond 1Q14). ■ Failure of ECB to address balance sheet shrinkage. ■ AQR prompting an acceleration in bank deleverage. <p>Upside risks</p> <ul style="list-style-type: none"> ■ Faster than anticipated rebound in capex. ■ Rights issues from key banks clean balance sheets quickly and kick-start euro area credit formation. ■ A prolonged weakness in inflation in core countries would lead to a strong policy response from the ECB.
Japan (Naoki Kamiyama)	
<ul style="list-style-type: none"> ■ Target level of TOPIX is 1,420 (next 12 months), which is 16x our FY03/15 EPS of ¥87. Our target and EPS estimate are based on currency forecast of 105. ■ Potential additional easing by BoJ in 2Q and regular wage increase in April are likely the next catalyst. Corporate tax cut for 2015 may be added to Third Arrow in June. ■ Positive for Autos and Technology to the year end, but also positive for defensives such as Utility and Pharma in the short run due to negative sentiment from geopolitical instability 	<ul style="list-style-type: none"> ■ US employment trend and Fed's communication to the market. ■ PM Abe's leadership depends on his popularity, which can be unstable with his potential foreign affairs actions. ■ Geopolitical issues in Europe and Asia, with potentially high energy/natural resources cost.
Asia-Pac ex-Japan (Ajay Kapur)	
<ul style="list-style-type: none"> ■ Flat-to-negative returns expected this year. Tactical trading opportunities are likely just like last summer. ■ Challenges for Asia – tapering concerns, higher interest rates, stronger US\$, shrinking US current account deficit, slowing growth, China trust debt problems, weakening EBIT margins. ■ China cyclical indicators continue to be a worry, with most China cyclical indicators weak/rolling over. ■ We recommend buying selected Asian state-owned enterprises (SOEs), Korea's semis and autos, and India's beaten-down "Policy Ignition" themes. ■ We need to see sentiment indicators reach panic levels, price technical indicators get to oversold, and capitulation in flows to make any tactical buy calls; until then we remain negative. 	<p>Upside risks</p> <ul style="list-style-type: none"> ■ A weak \$, and low bond yields reflecting another round of global QE. ■ Any drop in US/Europe policy uncertainty would be a boost to multiples for Asia's high-flying growth stocks. ■ China and India's focus on reforms/growth could also be an upside catalyst.
Emerging Markets (Ajay Kapur)	
<ul style="list-style-type: none"> ■ We remain unenthusiastic about EM equities. ■ Since 3Q2008, the US Fed QE has unleashed a massive USD2tn debt-driven carry trade into EMs. If QE is coming to an end, ideas that worked since end-2008 should be questioned. ■ LatAm 12m forward EPS growth estimates have begun falling and we expect this to continue due to the slowdown in China, although recent strength in commodities may provide some support. ■ Michael Harris, our EMEA strategist, thinks that cheap Russian equity needs more than just no escalation in Ukraine. Russian stocks need negotiations to lead to a Russian standing back from Crimea. 	<p>Upside risks</p> <ul style="list-style-type: none"> ■ A weak \$, and low bond yields reflecting another round of global QE and drop in US/Europe policy uncertainty.

Source: BofA Merrill Lynch Research Investment Committee

Asset allocation for individual investors

- The tables below represent asset allocation recommendations by investor profile (Conservative – Aggressive).
- Strategic allocations are long-term, 20-30 year benchmarks developed by Merrill Lynch Global Wealth Management.
- RIC allocations have a 12-month horizon, and are provided by the BofA Merrill Lynch Global Research Investment Committee.

Tier 0 (highest liquidity):

Highest liquidity needs with none of the portfolio invested in less liquid alternative asset categories. Tier 0 clients can also reference the Tier 1 strategic allocations if fulfilling the Alternative Assets allocation with liquid forms of alternative investments (including non-traditional funds).

Tier 1 (higher liquidity):

Up to 10% of the portfolio may be unavailable for 3–5 years.

Tier 2 (moderate liquidity):

Up to 20% of the portfolio may be unavailable for 3–5 years.

Tier 3 (lower liquidity)

Up to 30% of the portfolio may be unavailable for 3–5 years.

Asset allocation for US clients

Table 9: Strategic and RIC allocations without alternative assets (Tier 0 liquidity)

	Conservative		Moderately Conservative		Moderate		Moderately Aggressive		Aggressive	
	Strat.	RIC	Strat.	RIC	Strat.	RIC	Strat.	RIC	Strat.	RIC
	Traditional Assets									
Stocks	20%	24%	40%	45%	60%	68%	70%	80%	80%	88%
Bonds	55%	53%	50%	46%	35%	30%	25%	19%	15%	11%
Cash	25%	23%	10%	9%	5%	2%	5%	1%	5%	1%
Alternative Assets	0%	0%	0%	0%	0%	0%	0%	0%	0%	0%

Table 10: Strategic and RIC allocations with alternative assets (Tier 1 liquidity)

	Conservative		Moderately Conservative		Moderate		Moderately Aggressive		Aggressive	
	Strat.	RIC	Strat.	RIC	Strat.	RIC	Strat.	RIC	Strat.	RIC
	Traditional Assets									
Stocks	20%	24%	40%	45%	55%	62%	65%	75%	70%	77%
Bonds	50%	48%	45%	41%	30%	26%	20%	14%	10%	6%
Cash	25%	23%	10%	9%	5%	2%	5%	1%	5%	2%
Alternative Assets										
Real Assets*	1%	1%	1%	1%	2%	2%	2%	2%	6%	6%
Hedge Fund Strategies	4%	4%	4%	4%	8%	8%	8%	8%	9%	9%
Private Equity	0%	0%	0%	0%	0%	0%	0%	0%	0%	0%

* "Real Assets" defined to include commodities, TIPs and Real estate, including REITs. Figures may not sum to 100 because of rounding.

Table 11: Strategic and RIC allocations with alternative assets (Tier 2 liquidity)

	Conservative		Moderately Conservative		Moderate		Moderately Aggressive		Aggressive	
	Strat.	RIC	Strat.	RIC	Strat.	RIC	Strat.	RIC	Strat.	RIC
	Traditional Assets									
Stocks	15%	19%	35%	39%	50%	56%	55%	63%	55%	61%
Bonds	50%	48%	45%	42%	25%	21%	20%	15%	10%	7%
Cash	25%	23%	10%	9%	5%	3%	5%	2%	5%	2%
Alternative Assets										
Real Assets*	3%	3%	3%	3%	7%	7%	7%	7%	10%	10%
Hedge Fund Strategies	6%	6%	6%	6%	8%	8%	8%	8%	8%	8%
Private Equity	1%	1%	1%	1%	5%	5%	5%	5%	12%	12%

* "Real Assets" defined to include commodities, TIPs and Real estate, including REITs. Figures may not sum to 100 because of rounding.

Table 12: Strategic and RIC allocations with alternative assets (Tier 3 liquidity)

	Conservative		Moderately Conservative		Moderate		Moderately Aggressive		Aggressive	
	Strat.	RIC	Strat.	RIC	Strat.	RIC	Strat.	RIC	Strat.	RIC
	Traditional Assets									
Stocks	15%	19%	35%	39%	40%	45%	50%	59%	40%	45%
Bonds	45%	43%	40%	37%	25%	22%	15%	9%	10%	7%
Cash	25%	23%	10%	9%	5%	3%	5%	2%	5%	3%
Alternative Assets										
Real Assets*	3%	3%	3%	3%	9%	9%	9%	9%	11%	11%
Hedge Fund Strategies	10%	10%	10%	10%	14%	14%	14%	14%	14%	14%
Private Equity	2%	2%	2%	2%	7%	7%	7%	7%	20%	20%

* "Real Assets" defined to include commodities, TIPs and Real estate, including REITs. Figures may not sum to 100 because of rounding.

Notes: The Strategic Profile Asset Allocation Models with Alternative Assets were developed by Merrill Lynch Global Wealth Management for private clients. The Strategic allocations are identified by Merrill Lynch Global Wealth Management and are designed to serve as guidelines for a 20-30 year investment horizon. The RIC allocations are provided by the BofA Merrill Lynch Global Research Investment Committee. The Merrill Lynch Global Wealth Management models allocate assets among specified asset classes and, within each class, reflect broad investment diversification. The models offer benchmarks for traditional asset class allocation (stocks, bonds and cash), as well as models for allocations among traditional and alternative asset classes reflecting portfolios targeting varying liquidity levels. The models are designed to provide allocation benchmarks based on risk/return profiles. Merrill Lynch Global Wealth Management defines liquidity as the percentage of assets, by invested value, within a portfolio that can be reasonably expected to be liquidated within a given time duration under typical market conditions. Given the less-liquid nature of certain alternative assets, BofA Merrill Lynch Global Research does not make RIC allocation recommendations for portfolios that include these asset classes. Merrill Lynch Global Wealth Management clients should consult with their financial advisor about these allocations.

11 March 2014

Fixed-income allocation for US clients

Table 13: Combined municipal and taxable recommended sector allocations by Investor Profile

Sector	Conservative			Moderate**			Aggressive		
	Federal tax bracket								
	<25%*	28%	43.4%	<25%*	28%	43.4%	<25%*	28%	43.4%
Munis	0%	45%	50%	0%	58%	63%	0%	75%	80%
Treasuries & CDs	40%	22%	20%	32%	13%	12%	31%	7%	6%
TIPS	3%	2%	2%	4%	2%	2%	4%	1%	1%
Agencies (GSEs)	35%	19%	17%	0%	0%	0%	0%	0%	0%
Mortgages	2%	1%	1%	23%	10%	8%	19%	5%	4%
Corporates	20%	11%	10%	24%	10%	9%	22%	6%	4%
Preferreds	0%	0%	0%	1%	0%	0%	1%	0%	0%
High Yield*	0%	0%	0%	9%	4%	3%	12%	3%	2%
International: Developed Markets	0%	0%	0%	3%	1%	1%	3%	1%	1%
International: Emerging Markets USD	0%	0%	0%	2%	1%	1%	4%	1%	1%
International: Emerging Markets Local	0%	0%	0%	2%	1%	1%	4%	1%	1%
TOTALS	100%	100%	100%	100%	100%	100%	100%	100%	100%

TAXABLE-Maturity

1-4.99 years	100%	100%	100%	56%	56%	56%	56%	56%	56%
5-14.99 years	0%	0%	0%	40%	40%	40%	37%	37%	37%
15+ years	0%	0%	0%	4%	4%	4%	7%	7%	7%
TOTALS	100%	100%	100%	100%	100%	100%	100%	100%	100%

TAX EXEMPT-Maturity

1-4.99 years		90%	90%	10%	10%		10%	10%
5-9.99 years		10%	10%	40%	40%		20%	20%
10-14.99 years		0%	0%	25%	25%		35%	35%
15+ years		0%	0%	25%	25%		35%	35%
TOTALS		100%	100%	100%	100%		100%	100%

* Including tax-deferred accounts like IRAs and 401(k)s. ** The Moderate Category applies to the "Moderately Conservative", "Moderate", and "Moderately Aggressive" Profiles.

Changes from last month are highlighted in bold.

Source: BofA Merrill Lynch Global Research

US Equity sector allocation models

Table 14: Portfolio Strategy team's US equity sector weightings by investor profile

	Weight in S&P 500	Conservative	Moderately conservative	Moderate	Moderately aggressive	Aggressive
Consumer Discretionary	12.5%	10.0%	6.0%	11.0%	12.0%	13.0%
Consumer Staples	9.5%	22.0%	15.0%	12.0%	8.0%	4.0%
Energy	10.0%	12.0%	12.0%	10.0%	12.0%	13.0%
Financials	15.9%	12.0%	14.0%	15.0%	7.0%	6.0%
Health Care	13.6%	15.0%	11.0%	11.0%	17.0%	18.0%
Industrials	10.7%	11.0%	12.0%	16.0%	18.0%	15.0%
Info Technology	18.8%	6.0%	8.0%	14.0%	23.0%	25.0%
Materials	3.5%	0.0%	2.0%	2.0%	3.0%	3.0%
Telecom Services	2.5%	3.0%	10.0%	3.0%	0.0%	3.0%
Utilities	3.0%	9.0%	10.0%	6.0%	0.0%	0.0%
	100.0%	100.0%	100.0%	100.0%	100.0%	100.0%

Source: BofA Merrill Lynch Research Portfolios, S&P: S&P 500 Sector Weights are as of 28 February 2014; weights may not add up to 100% due to rounding.

A closer look at asset allocation for US clients: size, style and international

The tables below present in-depth size and style recommendations for US clients using the stocks, bonds and cash weights from the most liquid (Tier 0) liquidity profile on the previous page.

Table 15: Strategic and RIC allocations without alternatives

	Conservative		Moderately conservative		Moderate		Moderately aggressive		Aggressive	
	Strategic	RIC	Strategic	RIC	Strategic	RIC	Strategic	RIC	Strategic	RIC
Stocks	20%	24%	40%	45%	60%	68%	70%	80%	80%	88%
Lg. Cap Growth	8%	9%	16%	18%	23%	26%	25%	29%	27%	28%
Lg. Cap Value	12%	13%	16%	18%	23%	26%	25%	28%	21%	25%
Small Growth	0%	0%	2%	2%	2%	2%	3%	3%	6%	6%
Small Value	0%	0%	2%	1%	2%	1%	3%	2%	6%	5%
Intl: Developed	0%	1%	3%	5%	8%	11%	11%	14%	16%	20%
Intl: Emerging	0%	1%	1%	1%	2%	2%	3%	4%	4%	4%
Bonds	55%	53%	50%	46%	35%	30%	25%	19%	15%	11%
Tsys, CDs & GSEs	35%	41%	27%	16%	13%	11%	6%	7%	2%	4%
Mortgage Backed	14%	1%	13%	11%	9%	7%	6%	4%	4%	2%
IG Corp & Preferred	6%	11%	10%	12%	9%	7%	9%	5%	5%	3%
High Yield	0%	0%	0%	4%	2%	3%	1%	2%	2%	1%
International	0%	0%	0%	3%	2%	2%	3%	1%	2%	1%
Cash	25%	23%	10%	9%	5%	2%	5%	1%	5%	1%

Source: BofA Merrill Lynch Global Research

Table 16: Stocks – by size and style

	Conservative		Moderately conservative		Moderate		Moderately aggressive		Aggressive	
	Strategic	Core	Strategic	Core	Strategic	Core	Strategic	Core	Strategic	Core
Large cap growth	40%	38%	40%	40%	38%	38%	35%	35%	33%	31%
Large cap value	60%	54%	40%	41%	38%	38%	35%	35%	26%	28%
Small growth	0%	0%	4%	4%	4%	3%	4%	4%	8%	7%
Small value	0%	0%	4%	2%	4%	2%	4%	3%	8%	6%
International: Developed	0%	4%	10%	11%	13%	16%	18%	18%	20%	23%
International: Emerging	0%	4%	2%	2%	3%	3%	4%	5%	5%	5%

Source: BofA Merrill Lynch Global Research

Table 17: Bonds – by sector

	Conservative		Moderately conservative		Moderate		Moderately aggressive		Aggressive	
	Strategic	RIC	Strategic	RIC	Strategic	RIC	Strategic	RIC	Strategic	RIC
Tsys, CDs & GSEs	65%	78%	55%	36%	40%	36%	25%	36%	15%	35%
Mortgage Backed	25%	2%	25%	23%	25%	23%	25%	23%	25%	19%
IG Corp & Preferred	10%	20%	20%	25%	25%	25%	35%	25%	40%	23%
High yield	0%	0%	0%	9%	5%	9%	5%	9%	10%	12%
International	0%	0%	0%	7%	5%	7%	10%	7%	10%	11%

Source: BofA Merrill Lynch Global Research

Notes: Figures may not sum to 100 because of rounding

The Investor Profile Asset Allocation Model was developed by Merrill Lynch Global Wealth Management for private clients. The Strategic allocations are identified by Merrill Lynch Global Wealth Management and are designed to serve as guidelines for a 20-30-year investment horizon. The RIC allocations are provided by the BofA Merrill Lynch Global Research Investment Committee and reflect the group's outlook over the next 12 months.

11 March 2014

Asset allocation for global investors

The Asset Allocation for Global Clients is designed to reduce “home country bias” and introduce a currency perspective. RIC recommendations are based on qualitative views from our BofAML Global Research strategists, translated into recommendations with a quantitative optimization model. Strategic allocations are based on market cap weights for the MSCI All-Country World and BofAML Global Fixed Income Markets Indices (12/31/2010). Both allocations are for individual investors.

Table 18: Strategic and RIC allocations without alternatives (Tier 0 liquidity)

Tier 0 (highest liquidity):

Highest liquidity needs with none of the portfolio invested in less liquid alternative asset categories. Tier 0 clients can also reference the Tier 1 strategic allocations if fulfilling the Alternative Assets allocation with liquid forms of alternative investments (including non-traditional funds).

	Conservative		Moderately conservative		Moderate		Moderately Aggressive		Aggressive	
	Strat.	RIC	Strat.	RIC	Strat.	RIC	Strat.	RIC	Strat.	RIC
	Global Equities	20%	24%	40%	45%	60%	66%	70%	78%	80%
North America	8%	9%	19%	21%	28%	30%	32%	35%	37%	40%
Europe (ex UK)	4%	6%	7%	9%	11%	14%	13%	17%	15%	20%
UK	2%	2%	4%	4%	5%	5%	6%	6%	7%	7%
Japan	2%	2%	3%	4%	5%	7%	6%	7%	7%	8%
Pac Rim (ex Japan)	1%	1%	2%	1%	3%	2%	4%	3%	4%	3%
Emerging Markets	3%	4%	5%	6%	8%	8%	9%	10%	10%	12%
Global Fixed Income	55%	56%	50%	47%	38%	32%	28%	20%	18%	8%
Govt Bonds	34%	34%	30%	26%	24%	18%	18%	11%	10%	1%
Inv. Grade Credit	8%	8%	8%	9%	6%	6%	4%	4%	3%	3%
High Yield Credit	2%	2%	2%	2%	1%	1%	1%	1%	1%	1%
Collateralized Debt	11%	12%	10%	10%	7%	7%	5%	4%	4%	3%
Cash (USD)	25%	20%	10%	8%	2%	2%	2%	2%	2%	2%
Global Real Assets*	0%	0%	0%	0%	0%	0%	0%	0%	0%	0%
Global Hedge Fund Strat	0%	0%	0%	0%	0%	0%	0%	0%	0%	0%
Global Private Equity	0%	0%	0%	0%	0%	0%	0%	0%	0%	0%

*Real Assets include commodities, TIPS, Real estate, incl. REITS; Figures may not sum to 100 because of rounding; collateralized debt includes MBS

Table 19: Strategic and RIC allocations with alternatives (Tier 1 liquidity)

Tier 1 (higher liquidity):

Up to 10% of the portfolio may be unavailable for 3–5 years.

Note: The RIC does not provide core allocations to Alternative Investments due to their less liquid nature. Recommended allocations in these categories reflect strategic allocations.

	Conservative		Moderately conservative		Moderate		Moderately Aggressive		Aggressive	
	Strat.	RIC	Strat.	RIC	Strat.	RIC	Strat.	RIC	Strat.	RIC
	Global Equities	18%	22%	38%	43%	56%	62%	66%	74%	73%
North America	8%	9%	18%	20%	26%	28%	30%	33%	34%	36%
Europe (ex UK)	3%	5%	7%	9%	10%	13%	12%	16%	14%	17%
UK	2%	2%	3%	3%	5%	5%	6%	6%	6%	6%
Japan	2%	2%	3%	4%	5%	7%	6%	7%	6%	7%
Pac Rim (ex Japan)	1%	1%	2%	1%	3%	2%	3%	2%	4%	3%
Emerging Markets	2%	3%	5%	6%	7%	7%	9%	10%	9%	11%
Global Fixed Income	52%	53%	50%	47%	32%	26%	22%	14%	10%	3%
Govt Bonds	32%	32%	30%	26%	20%	14%	14%	7%	6%	0%
Inv. Grade Credit	8%	8%	8%	9%	5%	5%	3%	3%	2%	2%
High Yield Credit	2%	2%	2%	2%	1%	1%	1%	1%	0%	0%
Collateralized Debt	10%	11%	10%	10%	6%	6%	4%	3%	2%	1%
Cash (USD)	25%	20%	7%	5%	2%	2%	2%	2%	2%	2%
Global Real Assets*	1%	1%	1%	1%	2%	2%	6%	6%	12%	12%
Global Hedge Fund Strat	4%	4%	4%	4%	8%	8%	4%	4%	3%	3%
Global Private Equity	0%	0%	0%	0%	0%	0%	0%	0%	0%	0%

*The RIC does not make RIC allocations to these categories due to their long term, less liquid nature. Strategic benchmark weights are reflected in both columns

*Real Assets include commodities, TIPS, Real estate, incl. REITS; Figures may not sum to 100 because of rounding; collateralized debt includes MBS

Notes: Merrill Lynch Global Wealth Management's Strategic Profile Asset Allocation Models were developed for private Merrill Lynch Global Wealth Management Clients. The Strategic allocations are identified by Merrill Lynch Global Wealth Management are designed to serve as guidelines for a 20-30 year investment horizon. The RIC allocations are provided by the BofA Merrill Lynch Global Research Investment Committee. The Merrill Lynch Global Wealth Management models allocate assets among specified asset classes and, within each class, reflect broad investment diversification. The models offer benchmarks for traditional asset class allocation (stocks, bonds and cash), as well as models for allocations among traditional and alternative asset classes reflecting portfolios targeting varying liquidity levels. The models are designed to provide allocation benchmarks based on risk/return profiles. Merrill Lynch Global Wealth Management defines liquidity as the percentage of assets, by invested value, within a portfolio that can be reasonably expected to be liquidated within a given time duration under typical market conditions. Given the less-liquid nature of certain alternative assets, BofA Merrill Lynch does not make RIC allocation recommendations for portfolios that include these asset classes. Merrill Lynch Global Wealth Management clients should consult with their financial advisor about these allocations.

Asset allocation for global clients (continued)

Tier 2 (moderate liquidity):
Up to 20% of the portfolio may be unavailable for 3–5 years.

Note: The RIC does not provide core allocations to Alternative Investments due to their less liquid nature. Recommended allocations in these categories reflect strategic allocations.

Table 20: Strategic and RIC allocations with alternatives (Tier 2 liquidity)

	Conservative		Moderately conservative		Moderate		Moderately Aggressive		Aggressive	
	Strat.	RIC	Strat.	RIC	Strat.	RIC	Strat.	RIC	Strat.	RIC
Global Equities	14%	18%	35%	40%	45%	51%	51%	59%	53%	63%
North America	6%	7%	16%	18%	21%	23%	24%	27%	24%	27%
Europe (ex UK)	3%	5%	6%	8%	8%	11%	9%	13%	10%	15%
UK	1%	1%	3%	3%	4%	4%	4%	4%	5%	5%
Japan	1%	1%	3%	4%	4%	6%	4%	5%	4%	5%
Pac Rim (ex Japan)	1%	1%	2%	1%	2%	1%	3%	2%	3%	2%
Emerging Markets	2%	3%	5%	6%	6%	6%	7%	8%	7%	9%
Global Fixed Income	51%	52%	48%	45%	33%	27%	27%	19%	15%	5%
Govt Bonds	31%	31%	30%	26%	21%	15%	17%	10%	9%	0%
Inv. Grade Credit	8%	8%	7%	8%	5%	5%	4%	4%	2%	2%
High Yield Credit	2%	2%	2%	2%	1%	1%	1%	1%	1%	1%
Collateralized Debt	10%	11%	9%	9%	6%	6%	5%	4%	3%	2%
Cash (USD)	25%	20%	7%	5%	2%	2%	2%	2%	2%	2%
Global Real Assets*	2%	2%	2%	2%	4%	4%	4%	4%	8%	8%
Global Hedge Fund Strat	6%	6%	6%	6%	9%	9%	4%	4%	6%	6%
Global Private Equity	2%	2%	2%	2%	7%	7%	12%	12%	16%	16%

^aThe RIC does not make RIC allocations to these categories due to their long term, less liquid nature. Strategic benchmark weights are reflected in both columns.

^{*}Real Assets include commodities, TIPS, Real estate, incl. REITS; Figures may not sum to 100 because of rounding; collateralized debt includes MBS

Tier 3 (lower liquidity):
Up to 30% of the portfolio may be unavailable for 3–5 years.

Note: The RIC does not provide core allocations to Alternative Investments due to their less liquid nature. Recommended allocations in these categories reflect strategic allocations.

Table 21: Strategic and RIC allocations with alternatives (Tier 3 liquidity)

	Conservative		Moderately conservative		Moderate		Moderately Aggressive		Aggressive	
	Strat.	RIC	Strat.	RIC	Strat.	RIC	Strat.	RIC	Strat.	RIC
Global Equities	12%	16%	32%	37%	41%	47%	47%	55%	46%	52%
North America	5%	6%	14%	16%	19%	21%	22%	25%	21%	22%
Europe (ex UK)	2%	4%	6%	8%	8%	11%	9%	13%	9%	13%
UK	1%	1%	3%	3%	4%	4%	4%	4%	4%	4%
Japan	1%	1%	3%	4%	3%	5%	4%	5%	4%	5%
Pac Rim (ex Japan)	1%	1%	2%	1%	2%	1%	2%	1%	2%	1%
Emerging Markets	2%	3%	4%	5%	5%	5%	6%	7%	6%	7%
Global Fixed Income	48%	49%	48%	45%	27%	21%	21%	13%	7%	1%
Govt Bonds	30%	30%	30%	26%	17%	11%	13%	6%	5%	0%
Inv. Grade Credit	7%	7%	7%	8%	4%	4%	3%	3%	1%	1%
High Yield Credit	2%	2%	2%	2%	1%	1%	1%	1%	0%	0%
Collateralized Debt	9%	10%	9%	9%	5%	5%	4%	3%	1%	0%
Cash (USD)	25%	20%	5%	3%	2%	2%	2%	2%	2%	2%
Global Real Assets*	3%	3%	3%	3%	6%	6%	7%	7%	15%	15%
Global Hedge Fund Strat	9%	9%	9%	9%	16%	16%	11%	11%	14%	14%
Global Private Equity	3%	3%	3%	3%	8%	8%	12%	12%	16%	16%

^aThe RIC does not make RIC allocations to these categories due to their long term, less liquid nature. Strategic benchmark weights are reflected in both columns.

^{*}Real Assets include commodities, TIPS, Real estate, incl. REITS; Figures may not sum to 100 because of rounding; collateralized debt includes MBS

Notes: The Strategic Asset Allocation Model was developed by Merrill Lynch Global Wealth Management. The Strategic allocations are identified by Merrill Lynch Global Wealth Management and are designed to serve as guidelines for a 20-30 year investment horizon for Merrill Lynch Global Wealth Management clients. The RIC allocations are provided by the BofA Merrill Lynch Global Research Investment Committee and reflect their outlook over the next 12 months.

Table 22: Sector Weightings (Sectors listed in order of preference)

Sector	Weight in S&P 500	BofAML Weight (+ / = / -)	Comments	Industry Preferences / Themes
Information Technology	18.8%	+	<ul style="list-style-type: none"> Cash rich - dividend, buyback, capex play Attractive valuation - greatest implied upside on forward P/E of any sector Highest foreign exposure, secular and cyclical growth, lower EPS volatility vs history Stock pickers' industries: Tech Hardware and Software Risks: Consensus overweight, govt. spending cuts (Communications Equipment.), capex recovery could fail to materialize, no reacceleration in global growth 	Mega-Cap Tech
Industrials	10.7%	+	<ul style="list-style-type: none"> Less cyclical than you might expect: second-highest percentage of high quality stocks after Cons. Staples GDP-sensitive, capex exposure, global exposure; beneficiary of recovery in Europe Risks: Govt. spending cuts (Defense), capex recovery could fail to materialize, no reacceleration in global growth 	Industrial Conglomerates and other large cap, cash-rich multinationals
Energy	10.0%	+	<ul style="list-style-type: none"> Most under-owned it has been since 2008: 25% underweight in the average mutual fund Trading at a large discount to history across relative valuation metrics Benefits from US domestic energy advantage Benefits from reacceleration in global growth, high foreign exposure, attractive yield at many mega-caps Risks: oil price volatility, no reacceleration in global growth 	Big cap Oil & Gas
Health Care	13.7%	=	<ul style="list-style-type: none"> Large cap Pharmaceuticals are our preferred yield play (cheap, under-owned) Attractive across valuation metrics (except for Biotech) Health Care Reform benefits hospitals, Medicaid Managed Care, Labs, and PBMs Risks: Most govt. exposure of any sector, overweight by mutual funds; implementation risk around HC Reform 	Pharmaceuticals
Consumer Staples	9.5%	=	<ul style="list-style-type: none"> Contrarian – under-owned by fund managers, inexpensive vs. history across valuation metrics High quality, dividend yield, and dividend growth potential (lower payout ratio than Utilities/Telecom) Higher foreign exposure and less government risk than the other defensive sectors Risks: inflation, upside surprise to profits growth 	Avoid Tobacco on valuation
Financials	15.9%	=	<ul style="list-style-type: none"> Benefits from US cyclical recovery / housing recovery, cash deployment potential Attractively valued on relative P/B, but remains expensive vs. history on relative fwd. P/E High beta, deteriorated in quality, likely to underperform mid/late cycle Tailwind to banks from refinancing boom and from lower credit costs have likely ended Risks: continued litigation, regulatory reform, stress in European financial system, US recession 	Globally diversified banks, Capital Markets, Consumer Finance, beneficiaries of steepening yield curve Avoid REITs (expensive / rate sensitive)
Materials	3.5%	=	<ul style="list-style-type: none"> Poor risk-reward vs other non-financial cyclicals (high beta but lower LTG) Risk: no bottoming in China growth (more leveraged to improvement in China than Industrials, which is also highly exposed to improvement in Europe as well as EM) 	Chemicals
Consumer Discretionary	12.5%	-	<ul style="list-style-type: none"> Overweight by active managers, expensive across various valuation metrics, and deteriorating EPS revisions Rising rates may drive shift from spending to saving and may slow housing recovery Sector performance has overshot its historical relationship with jobless claims Operating margins are at peak levels Business spending forecast to grow 3x faster than consumer spending by early next year 	Media (business spending exposure) Select Specialty Retail & Household Durables (home renovation theme), Autos, Globally diversified consumer stocks
Utilities	3.0%	-	<ul style="list-style-type: none"> Most expensive sector vs history on relative fwd. P/E, no growth, high payout ratios (little room to raise dividends as rates rise) High dividend yield, under-owned by fund managers, hedge against macro uncertainty, purely domestic 	
Telecom	2.5%	-	<ul style="list-style-type: none"> High payout ratios (little room to raise dividends as rates rise) Highest dividend yield, hedge against macro uncertainty, low intra-stock correlations Worst risk-reward tradeoff of all 10 sectors 	

*Weights in S&P 500 as of previous month-end. May not add to 100% due to rounding.
Source: BofA Merrill Lynch US Equity & US Quant Strategy

Core Portfolio

The Equity Core Portfolio attempts to achieve capital gains over a 1-2 year time horizon by combining tactical sector weighting decisions from our US Equity Strategy team with stock selections that offer attractively valued growth potential. For recent changes and current holdings, please see the following: [Equity Core Portfolio Snapshot](#).

Portfolio of the month

Equity Growth Portfolio

The primary objective is a buy and hold strategy of well positioned companies in strategically favored economic sectors and industries. The focus is on companies with consistent and above average earnings growth that has been demonstrated over time under a variety of economic circumstances. Investors are willing to consider a higher P/E multiple for a faster pace of future earnings.

Table 23: Equity Growth Portfolio

Sectors/Target Weights	Symbol	Proposed Weight	Price		Yield †	QRQ Rating	Footnote
			Close 03/7/2014	Average Cost			
Information Technology (23%)							
Cognizant	CTSH	4%	107.22	\$65.50	0.00%	B-1-9	Bbijopsw
Google	GOOG	3%	1214.79	\$515.17	0.00%	A-1-9	Bbgjopsv
Apple	AAPL	3%	530.44	\$451.96	2.30%	C-2-7	Bbgjopsw
Avago	AVGO	3%	62.75	\$33.79	1.72%	C-1-7	Bbisvw
VMware Inc	VMW	4%	101.51	\$93.72	0.00%	C-1-9	Bbijopsw
Salesforce.com	CRM	2%	60.74	\$29.17	0.00%	C-1-9	Bbgjopsw
Adobe	ADBE	4%	68.52	\$67.04	0.00%	B-1-9	Bbijopsv
Industrials (18%)							
Boeing	BA	4%	128.54	\$74.03	2.27%	B-1-7	Bbgjopsw
Honeywell	HON	3%	95.44	\$38.89	1.89%	B-1-7	Bbgjopsw
Precision Cast	PCP	4%	262.96	\$224.25	0.05%	B-1-7	Bbijopsw
FedEx Corp.	FDX	4%	137.43	\$87.32	0.44%	B-1-7	Bbgjopsv
Caterpillar Inc	CAT	3%	97.05	\$84.79	2.47%	B-1-7	BObgjopsw
Health Care (17%)							
Zoetis	ZTS	3%	30.58	\$30.95	0.94%	C-1-7	Bbijopsw
Express Scripts	ESRX	3%	78.30	\$46.44	0.00%	B-1-9	BObgjopsw
Thermo Fisher	TMO	4%	126.67	\$55.65	0.47%	A-1-7	BObgjopsw
Covidien	COV	4%	71.35	\$47.63	1.79%	B-1-7	Bbijopsw
Gilead	GILD	3%	79.58	\$38.59	0.00%	B-1-9	BObgjopsw
Consumer Discretionary (12%)							
Dick's	DKS	3%	53.60	\$41.25	0.93%	C-1-7	Bbijopsw
Amazon.com	AMZN	3%	372.06	\$175.93	0.00%	B-1-9	Bbijopsv
Discovery Comm	DISCA	3%	85.52	\$29.87	0.00%	C-1-9	#Bbijopsw
BorgWarner	BWA	3%	61.31	\$22.77	0.82%	C-1-7	Bbijopsw
Energy (12%)							
Schlumberger	SLB	3%	92.98	\$93.72	1.72%	B-1-7	Bbijopsw
Pioneer	PXD	3%	196.00	\$145.13	0.04%	C-1-7	Bbijopsv
Cabot Oil & Gas	COG	3%	35.11	\$39.07	0.23%	C-1-7	Bbijops
Noble	NBL	3%	69.23	\$52.88	0.81%	B-1-7	BObgjopsv
Consumer Staples (8%)							
Whole Foods Mkt.	WFM	4%	53.67	\$35.37	0.89%	C-1-7	Bbijpww
Costco	COST	4%	113.50	\$68.31	1.09%	B-1-7	Bbijopsw
Financials (7%)							
Affiliated Mgrs.	AMG	4%	196.45	\$56.60	0.00%	C-1-9	Bbgjopsw
Goldman Sachs	GS	3%	174.26	\$118.86	1.26%	B-2-7	BObgjopsw
Materials (3%)							
Monsanto	MON	3%	114.08	\$60.05	1.51%	B-1-7	Bbgjopsw
Telecomm. Services (0%)							
Utilities (0%)							
Cash (0%)		0%					
		100%			0.78%		

Source: Source: Bloomberg, BofA Merrill Lynch Global Research

†: Yields are estimated based on historical information. There is no assurance that the yield will remain the same or increase. Yields may decrease. Yields do not reflect transaction costs/fees or taxes and may be affected by currency fluctuations

11 March 2014

Stock lists

US 1 List ([link to latest report](#))

Table 24: US 1 list (7 March 2014)

Ticker	Company	Rating	Date added	Price when added	Price as of 07 Mar	Footnotes
AIG	AIG	C-1-7	01/28/14	48.46	51.25	BObjopsv
AGN	Allergan	B-1-7	05/28/13	99.71	127.99	Bbijopsvw
AVY	Avery Dennison	B-1-7	03/04/14	51.79	51.56	Bbgjopsv
BIB	Biogen Idec	B-1-9	09/18/13	246.34	328.75	Bbijopsvw
BX	Blackstone	C-1-7	09/16/13	23.70	34.77	Bbijopsvw
C	Citigroup	B-1-7	02/07/14	49.34	49.62	ABObjopsvw
CHKP	Check Point	C-1-9	11/19/13	61.57	69.06	Bbijosw
DIS	Disney Walt	B-1-7	02/04/14	71.05	82.21	Bbijopsvw
DKS	Dick's	C-1-7	09/16/13	50.88	53.60	Bbijopsvw
EMN	Eastman Chemical	B-1-7	04/15/13	65.59	87.54	Bbijopsvw
EQIX	Equinix	B-1-9	06/04/13	198.03	193.44	Bbijopsvw
ERJ	Embraer	C-1-7	11/05/13	29.96	34.81	Bbijopsvw
ESRX	Express Scripts	B-1-9	10/01/13	62.63	78.30	BObjopsvw
F	Ford Motor	C-1-7	10/01/13	17.19	15.62	BObjopsvw
HES	Hess	B-1-7	12/17/13	79.51	81.87	Bbijopsvw
MMM	3M	B-1-7	02/25/14	132.93	134.11	Bbijopsvw
NUE	Nucor	C-1-7	01/28/14	48.99	50.15	Bbgjopsv
NWL	Newell	C-1-7	10/22/13	29.08	31.32	Bbijopsvw
NXPI	NXP	C-1-9	11/26/13	42.48	58.56	Bbgjopsvw
OZM	Och-Ziff	C-1-7	09/24/13	11.04	14.22	Bbijopvw
PXD	Pioneer	C-1-7	06/18/13	154.65	196.00	Bbijopsv
THRX	Theravance	C-1-9	10/22/13	36.32	34.86	Bbijopsvw
VZ	Verizon Comm	A-1-7	02/25/14	46.29	47.15	BObjopsvw
WHR	Whirlpool	B-1-7	09/18/13	149.81	145.99	Bbgjopsvw

Note: We last modified this portfolio on 4 March 2014. Please see the original report for details, including price objectives and investment rationale. Please see Footnote Key at the back of this report. One or more members of the US 1 Committee (or a household member) owns stock of one or more companies on the US 1 list. Source: BofA Merrill Lynch Global Research.

Endeavor, the Small Cap US Buy List ([link to latest report](#))

Table 25: Endeavor Stocks / US Small Cap Buy List (7 March 2014)

GICS Sector	Company	Symbol	BofA-ML Opinion	Price 3/7/14	Mkt Value (\$ mn)	MLSCR Model Scores (100=best; 1=worst)		Add Date	Px on Add date	Footnote
						Aurora	Enhanced Contrarian			
Consumer Disc	American Axle & Mfg	AXL	C-1-9	19.67	1,487	90	97	8/9/2010	10.37	Bbgjopsvw
Consumer Disc	Itt Educational Services Inc	ESI	C-2-9	29.85	698	96	93	2/11/2014	28.72	Bbijpww
Consumer Disc	Jack In The Box Inc	JACK	C-1-9	59.45	2,490	98	88	7/9/2012	27.62	Bbijpww
Consumer Disc	Sonic Automotive Inc -CI A	SAH	C-1-7	24.31	1,281	48	70	10/11/2011	13.23	Bbgjipsw
Consumer Disc	Standard Pacific Corp	SPF	B-1-9	8.94	2,482	79	71	6/14/2013	8.96	Bbijopvw
Energy	Rosetta Resources Inc	ROSE	C-1-9	46.80	2,869	18	71	6/14/2013	45.46	Bbgjopsv
Financials	Coresite Realty Corp	COR	C-2-7	30.82	659	91	98	5/14/2012	24.65	Bbijpsw
Health Care	Medassets Inc	MDAS	C-1-9	24.02	1,483	57	81	1/11/2013	18.60	Bbijpsw
Health Care	Wellcare Health Plans Inc	WCG	C-1-9	61.59	2,696	24	75	3/9/2012	67.81	Bbgjips
Health Care	Molina Healthcare Inc	MOH	B-1-9	37.60	1,725	92	92	8/15/2013	34.48	Bbijopsvw
Health Care	Pharmacia Corp	PMC	C-1-9	24.95	734	84	90	1/19/2009	16.21	Bbijpww
Industrials	Alaska Air Group Inc	ALK	C-1-7	89.40	6,146	97	95	10/11/2011	30.89	Bbijopsvw
Industrials	Swift Transportation Co	SWFT	C-1-9	26.44	3,716	92	69	8/15/2013	17.50	Bbijpsw
Industrials	Curtiss-Wright Corp	CW	B-1-8	66.05	3,147	100	98	2/11/2014	59.41	Bbijopsvw
Info Tech	FEI Co	FEIC	C-1-7	104.87	4,419	87	50	5/14/2012	45.56	Bbijopsvw
Info Tech	Mentor Graphics Corp	MENT	C-1-7	22.59	2,588	63	89	5/14/2012	14.05	Bbijopsvw
Info Tech	Cadence Design Systems	CDNS	C-1-9	15.91	4,584	72	85	7/5/2011	10.60	Bbijopsvw
Materials	Berry Plastics Group	BERY	C-1-9	24.43	2,839	92	90	6/14/2013	23.44	Bbgjopsv
Materials	Graphic Packaging Holding	GPK	C-1-9	10.45	3,394	95	85	5/18/2011	5.30	Bbgjopsvw

Source: BofA Merrill Lynch Small Cap Research

11 March 2014

US High Quality & Dividend Yield Screen (methodology)

Table 26: High Quality and Dividend Yield Screen (March 2014)

Date Added	Ticker	Name	Sector	ROE (%)	DEBT / EQUITY	YIELD (%)	Quality	Mkt Val (\$mn)	Cost Price	Price	QRQ	FCF/ DIV	Footnotes	
4/1/2012	ADP	ADP	Info Tech	22.4	0.5	2.3	A	37,445	55.19	77.78	B-1-7	1.8	Bbijopsw	
8/1/2013	CSX	CSX Corporation	Industrials	19.1	0.9	2.1	A	28,089	26.05	27.71	B-1-7	1.1	Bbijopvw	
2/3/2014	DD	DuPont	Materials	21.7	0.8	2.7	A-	61,697	61.61	66.62	B-1-7	2.8	Bbijopsw	
1/2/2013	EMR	Emerson	Industrials	19.0	0.5	2.5	A+	45,941	54.86	65.26	B-2-7	1.7	Bbijopsw	
2/3/2014	GD	General Dynamics	Industrials	19.2	0.3	2.0	A	38,580	99.68	109.54	B-1-7	3.1	Bbijopsw	
7/1/2013	GPC	Genuine Parts	Consumer Disc	21.6	0.2	2.4	A	13,597	83.23	88.09	A-2-7	2.1	Bbijopsw	
3/1/2013	JNJ	Johnson & Johnson	Health Care	19.9	0.2	2.8	A+	259,911	76.70	92.12	A-2-7	2.0	Bbgjopsw	
10/1/2012	LLTC	Linear Technology	Info Tech	44.1	0.7	2.2	A-	10,968	31.82	46.84	B-1-7	1.9	Bbijpsw	
2/2/2009	MCD	McDonald's Corp	Consumer Disc	35.7	0.9	3.3	A	94,677	58.02	95.15	B-1-7	1.4	Bbgjopsw	
8/1/2013	NOC	Northrop Grumman	Industrials	19.4	0.6	2.0	A	26,868	94.89	121.03	B-2-7	3.8	Bbgjopsw	
2/3/2014	NSC	Norfolk Southern	Industrials	18.1	0.8	2.2	A	28,392	91.79	91.91	A-1-7	1.3	Bbgjopsw	
2/1/2013	PG	Procter & Gamble	Consumer Staples	16.0	0.5	3.0	A+	213,816	75.92	78.66	A-1-7	1.5	Bbgjopsw	
4/1/2012	PAYX	Paychex	Info Tech	34.1	0.0	3.3	A	15,251	30.99	41.76	A-2-7	1.2	Bbijopw	
8/1/2013	RTN	Raytheon Co.	Industrials	20.3	0.4	2.2	A+	31,280	75.65	97.91	A-2-7	3.0	Bbijopsw	
12/3/2012	WMT	Wal*Mart Stores	Consumer Staples	20.9	0.7	2.5	A+	241,712	72.02	74.7	A-1-7	1.9	Bbgjopsv	
2/1/2012	XOM	ExxonMobil	Energy	19.2	0.1	2.6	A+	420,557	83.74	96.27	A-2-7	1.4	Bbijopsw	
4/1/2012	ADP	ADP	Info Tech	22.4	0.5	2.3	A	37,445	55.19	77.78	B-1-7	1.8	Bbijopsw	
Average:				23.2	0.5	2.5		98,048.7				2.0		
S&P 500 benchmark:				14.6	1.1	1.9								

Source: BofA Merrill Lynch Global Research, BofA Merrill Lynch US Quantitative Strategy, FactSet, S&P Note: Calculations are based on data from the last 12 months. Financials stocks are excluded because they typically have very high Debt/Equity ratios that have nothing to do with their capital structure. We calculate the benchmark S&P 500 ROE by taking the average of the aggregate ROE (S&P 500 EPS ÷ by book value per share) and the median ROE. Disclaimer: These stocks have been selected according to the specified screening criteria and do not constitute a recommended list. Investors looking for a high quality dividend yield oriented investment can consider this analysis as one part of their decision making process, but should also consider other factors including fundamental opinions, financial risk, investment risk, management strategies and operating and financial outlooks.

International Low Volatility & Dividend Yield Screen (methodology)

Table 27: International Low Volatility & Dividend Yield screen (March 2014)

Ticker	Company	Country	Sector	Market Value ¹	Price as of 7 Mar	LT Debt /Equity ¹	Gross Div. Yield ^{1†}	5 Year Annualized Dividend Growth ¹	QRQ	Footnote
ABB	ABB	Switzerland	Industrials	58,980	25.51	39.4	3.1	9.4	A-1-7	BObjopsv
BHP	BHP Billiton Ltd-Spon ADR	Australia	Materials	178,860	66.71	37.3	3.4	7.2	A-1-7	Bbijopsv
CM	Canadian Imperial Bank of Commerce	Canada	Financials	33,368	84.72	31.8	4.2	2.4	B-2-7	Bbgjopsv
CAJ	Canon	Japan	Info Technology	41,640	30.60	0.0	4.1	4.1	A-2-7	Bbijopsv
NE	Noble Corp Plc	Switzerland	Energy	7,891	31.68	61.4	4.8	44.4	B-1-7	Bbis
NVS	Novartis	Switzerland	Health Care	225,101	83.14	15.1	3.3	9.7	A-2-7	Bbijopsv
NTT	NTT	Japan	Telecom Services	64,201	28.65	30.8	2.8	9.5	A-1-7	Bbijopsv
DCM	NTT DoCoMo	Japan	Telecom Services	72,808	16.30	6.3	3.6	5.5	A-2-7	Bbijopsv
RIO	Rio Tinto	United Kingdom	Materials	106,550	53.39	46.0	3.8	5.3	B-2-7	Bbijopsv
RY	Royal Bank of Canada	Canada	Financials	93,800	64.65	16.6	3.9	6.8	B-1-7	BObjopsv
SNY	Sanofi	France	Health Care	137,306	51.93	18.3	3.7	2.0	A-1-7	Bbgjopsv
BNS	Scotiabank	Canada	Financials	69,525	57.36	13.9	4.1	5.4	B-1-7	Bbgjopsv
SI	Siemens AG	Germany	Industrials	117,288	129.25	64.7	3.1	27.7	A-2-7	Bbijopsv
SLF	Sun Life Financial Inc.	Canada	Financials	21,115	34.94	30.3	3.7	1.1	B-2-7	Bbijopsv
SYT	Syngenta AG	Switzerland	Materials	33,814	75.86	18.9	2.8	17.1	A-2-7	Bbijopsv
TD	The Toronto-Dominion Bank	Canada	Financials	83,491	45.48	18.7	3.7	7.4	B-1-7	Bbijopsv
TRI	Thomson Reuters	Canada	Consumer Disc	28,164	34.17	45.5	3.8	3.9	B-1-7	Bbgjopsv
VOD	Vodafone Group Plc	United Kingdom	Telecom Services	109,904	39.93	40.3	2.8	37.2	A-1-7	BObjopsv

This is a screen and not a recommended list either individually or as a group of stocks. Investors should consider the fundamentals of the companies and their own individual circumstances / objectives before making any investment decisions.

¹Investors should be aware that foreign governments sometimes withhold a percentage of dividends paid to US shareholders, which may adversely impact an investor who is following the list and may affect the yield received when compared to the stated yield for a security. [†] Data as of prior month-end. Source: Bloomberg; FactSet Research Systems; BofA Merrill Lynch Global Research

Research portfolios and stock lists

Note: Please be aware that links on this page are directed to lists that are updated as of the date of this publication. There may have been updates to one or more lists. Financial Advisors should check for the latest available constituents.

Stock lists

Regional Focus or 1 Lists are best investment ideas chosen among our Buy-rated stocks.

[US](#)
[Europe](#)

[Japan](#)
[Asia-Pac](#)

[Technical Titans List](#) Designed to identify common stocks that are attractive based on technical analysis, the objective of this list is to capture short to intermediate-term (3-6 month) price appreciation, but positions can be held longer term.

[Growth 10 & Value 10](#) Consists of 10 stocks each, chosen by the highest five-year EPS growth rate (Growth 10) or lowest trailing 12-month P/E ratio (Value 10) after quantitative screening criteria.

Stock portfolios

US Large Cap Equity

Five portfolios offerings are available to match each of the client profiles of Capital Preservation, Income, Income & Growth, Growth and Aggressive Growth. These match the risk profiles of conservative, moderately conservative, moderate, moderately aggressive and aggressive, respectively. A sixth portfolio called the Core Portfolio is designed to reflect weighting decisions of our US equity strategy team. Each of these portfolios employs a combination of top-down sector weightings and bottom-up stock selection focusing on the 10 GICS sectors.

[Holdings](#)

[Primer](#)

US Mid Cap Equity

Launched in April 2010, this portfolio invests in stocks between \$2-12 billion that are selected using a combination of fundamental, quantitative and portfolio management tools, and is built on the GICS sector framework.

[Holdings](#)

[Primer](#)

International Equity

This portfolio consists of ADRs and US-listed shares of non-US companies representing all major regions outside the US: Europe/Middle East/Africa, Asia, Latin America and Canada, and is built on the GICS sector framework.

[Holdings](#)

[Primer](#)

Economic forecast summary

Real Economic Activity, % SAAR	1Q 13	2Q 13	3Q 13	4Q 13	1Q 14	2Q 14	3Q 14	4Q 14	2012	2013	2014	2015	
Real GDP	1.1	2.5	4.1	2.4	1.7	3.2	3.4	3.4	2.8	1.9	2.8	3.3	
% Change, Year Ago	1.3	1.6	2.0	2.5	2.7	2.8	2.7	2.9					
Final Sales	0.2	2.1	2.5	2.3	2.5	3.5	3.4	3.5	2.6	1.7	2.8	3.3	
Domestic Demand	0.5	2.1	2.3	1.2	2.6	3.6	3.6	3.6	2.4	1.5	2.7	3.4	
Consumer Spending	2.3	1.8	2.0	2.6	2.5	3.2	3.4	3.4	2.2	2.0	2.7	3.1	
Residential Investment	12.5	14.2	10.3	-8.8	-1.5	25.0	18.0	18.0	12.9	12.1	7.6	16.5	
Nonresidential Investment	-4.6	4.7	4.8	7.3	3.4	6.5	5.8	5.8	7.3	2.8	5.4	5.7	
Structures	-25.7	17.6	13.4	0.2	-1.0	8.0	5.0	5.0	12.7	1.4	4.8	5.6	
Equipment	1.6	3.2	0.2	10.5	5.5	8.0	8.0	8.0	7.6	3.1	6.6	7.6	
Intellectual Property	3.8	-1.5	5.7	8.0	3.5	3.2	3.2	3.2	3.4	3.4	4.2	3.1	
Government	-4.2	-0.4	0.4	-5.5	3.0	-0.2	0.2	0.2	-1.0	-2.3	-0.3	0.5	
Exports	-1.3	8.0	3.9	9.4	2.0	3.5	4.0	4.5	3.5	2.7	4.6	4.7	
Imports	0.6	6.9	2.4	1.5	2.0	4.0	4.5	4.5	2.2	1.4	3.1	4.7	
Net Exports (Bil 09\$)	-422	-424	-420	-383	-385	-391	-398	-402	-431	-412	-402	-402	
Contribution to growth (ppts)	-0.3	-0.1	0.1	1.0	-0.1	-0.2	-0.2	-0.1	4.0	0.1	0.1	-0.1	
Inventory Accumulation (Bil 09\$)	42.2	56.6	115.7	117.4	85.0	75.0	72.0	68.0	57.6	83.0	71.3	71.3	
Contribution to growth (ppts)	0.9	0.4	1.7	0.1	-0.9	-0.3	-0.1	-0.1	0.2	0.2	-0.1	-0.1	
Nominal GDP (Bil \$, SAAR)	16535	16661	16913	17081	17195	17396	17609	17828	16245	16797	17507	18378	
% SAAR	2.8	3.1	6.2	4.0	2.7	4.7	5.0	5.1	4.6	3.4	4.2	5.0	
Key Indicators													
Industrial Production (% SAAR)	4.2	1.2	2.4	5.5	0.9	3.9	3.5	3.4	3.6	2.6	3.0	3.6	
Capacity Utilization (%)	78.2	77.9	78.4	78.9	78.6	79.0	79.3	79.6	77.5	78.4	79.1	80.5	
Nonfarm Payrolls (Avg mom change, 000s)	206	201	172	195	151	200	200	225	186	194	194	238	
Civilian Unemployment Rate (%)	7.7	7.5	7.3	7.0	6.6	6.4	6.3	6.1	8.1	7.4	6.4	5.9	
Civilian Participation Rate (%)	63.5	63.4	63.2	62.8	63.0	63.0	63.0	63.0	63.7	63.2	63.0	63.2	
Productivity (% SAAR)	-1.7	1.8	3.6	3.2	0.2	1.2	1.1	1.2	1.5	0.6	1.6	1.1	
Personal Savings Rate (%)	4.1	4.5	4.9	4.3	3.8	3.3	2.8	2.3	5.6	4.5	3.0	1.0	
Light Vehicle Sales (Millions SAAR)	15.3	15.5	15.7	15.6	15.3	15.7	15.9	16.1	14.4	15.5	15.7	16.5	
Housing Starts (Thous. SAAR)	957	869	882	1016	916	1071	1155	1259	783	931	1100	1300	
Current Account (% of GDP)									-2.7	-2.7	-2.5	-2.5	
US Budget Balance (\$bn, Fiscal Year)									-1089	-680	-550	-500	
Inflation													
GDP Price Index (% SAAR)	1.3	0.6	2.0	1.3	1.4	1.5	1.6	1.6	1.7	1.4	1.5	1.7	
% Change, Year Ago	1.6	1.3	1.3	1.4	1.4	1.6	1.5	1.5					
Core PCE Chain Prices (% SAAR)	1.4	0.6	1.4	1.1	1.1	1.2	1.2	1.3	1.8	1.2	1.2	1.5	
% Change, Year Ago	1.5	1.2	1.2	1.1	1.1	1.2	1.4	1.4					
CPI, Consumer Prices (% SAAR)	1.2	0.4	2.2	1.1	1.7	1.5	1.5	1.4	2.1	1.5	1.5	1.4	
% Change, Year Ago	1.7	1.4	1.6	1.2	1.4	1.6	1.5	1.5					
CPI ex Food & Energy (% SAAR)	2.0	1.4	1.8	1.6	1.5	1.4	1.6	1.6	2.1	1.8	1.5	1.7	
% Change, Year Ago	1.9	1.7	1.7	1.7	1.6	1.6	1.5	1.5					
Global Economic Forecasts													
		GDP growth, %				CPI inflation, %				Short-term interest rates, %			
	2012	2013F	2014F	2015F	2012	2013F	2014F	2015F	Current	2013	2014F	2015F	
Global	3.0	2.9	3.5	3.7	3.3	2.9	3.3	3.3	2.58	2.50	2.92	3.03	
Global ex US	3.1	3.2	3.6	3.9	3.7	3.3	3.8	3.8	3.29	3.14	3.66	3.79	
Euro Area	-0.7	-0.4	1.0	1.5	2.5	1.4	0.8	1.2	0.25	0.25	0.25	0.25	
UK	0.3	1.8	2.7	2.7	2.8	2.6	1.7	2.0	0.50	0.50	0.50	1.25	
Japan	1.4	1.6	1.6	1.5	0.0	0.4	2.5	2.2	0.10	0.10	0.10	0.10	
Canada	1.7	2.0	2.1	2.3	1.5	0.9	1.2	1.6	1.00	1.00	1.00	1.00	
Emerging EMEA	2.8	2.2	2.3	2.1	4.8	4.9	4.9	4.1	6.16	4.68	5.99	6.27	
Latin America	2.9	2.3	2.3	3.0	6.2	7.4	10.6	9.1	8.86	8.01	11.66	11.77	
Brazil	1.0	2.1	1.6	2.0	5.4	6.2	6.2	5.7	10.75	10.00	10.75	11.75	
Emerging Asia	5.8	6.0	6.3	6.4	4.3	3.4	3.8	4.1	4.10	4.01	3.93	4.01	
China	7.7	7.7	7.6	7.2	2.7	2.7	3.1	3.5	3.00	3.00	3.00	3.00	

Shaded regions represent BofA Merrill Lynch Global Research forecast
Source: BofA Merrill Lynch Global Research

11 March 2014

Interest rate forecast summary

(% EOP)	3Q12	4Q12	1Q13	2Q13	3Q13	4Q13	1Q14	2Q14	3Q14	4Q14	1Q15	2Q15	2012	2013	2014	2015
<i>Fed Funds</i>	0-0.25	0-0.25	0-0.25	0-0.25	0-0.25	0-0.25	0-0.25	0-0.25	0-0.25	0-0.25	0-0.25	0-0.25	0-0.25	0-0.25	0-0.25	0-0.25
<i>3-Month T-Bill</i>	0.08	0.04	0.07	0.03	0.01	0.07	0.10	0.10	0.10	0.10	0.15	0.15	0.04	0.07	0.10	0.40
<i>3-Month LIBOR</i>	0.36	0.31	0.28	0.27	0.25	0.25	0.23	0.25	0.25	0.25	0.30	0.30	0.31	0.25	0.25	0.65
<i>2-Year T-Note</i>	0.23	0.25	0.24	0.36	0.32	0.38	0.35	0.50	0.60	0.75	0.90	1.15	0.25	0.38	0.75	1.60
<i>5-Year T-Note</i>	0.63	0.72	0.76	1.39	1.38	1.74	1.65	2.15	2.45	2.65	2.75	3.00	0.72	1.74	2.65	3.25
<i>10-Year T-Note</i>	1.63	1.75	1.84	2.49	2.61	3.03	2.90	3.50	3.75	3.75	3.75	4.00	1.75	3.03	3.75	4.25
<i>30-Year T-Bond</i>	2.82	2.95	3.10	3.50	3.68	3.97	3.80	4.40	4.60	4.60	4.60	4.70	2.95	3.97	4.60	5.00

Shaded regions represent BofA Merrill Lynch Global Research forecast

Source: BofA Merrill Lynch Global Research

FX rate forecast summary

	Spot	14-Mar	14-Jun	14-Sep	14-Dec	15-Mar	15-Jun
G3							
EUR-USD	1.39	1.35	1.31	1.28	1.25	1.23	1.21
USD-JPY	103	105	106	107	108	110	112
EUR-JPY	143	142	139	137	135	135	136
Dollar Bloc							
USD-CAD	1.11	1.13	1.15	1.16	1.17	1.17	1.17
AUD-USD	0.91	0.89	0.88	0.88	0.88	0.86	0.84
NZD-USD	0.85	0.80	0.80	0.78	0.76	0.75	0.74
Europe							
EUR-GBP	0.83	0.81	0.80	0.79	0.78	0.77	0.76
GBP-USD	1.67	1.67	1.64	1.62	1.60	1.60	1.59
EUR-CHF	1.22	1.23	1.24	1.25	1.26	1.27	1.28
USD-CHF	0.88	0.91	0.95	0.98	1.01	1.03	1.06
EUR-SEK	8.86	8.95	8.90	8.80	8.70	8.60	8.50
USD-SEK	6.38	6.63	6.79	6.88	6.96	6.99	7.02
EUR-NOK	8.30	8.30	8.20	8.00	7.90	7.80	7.70
USD-NOK	5.98	6.15	6.26	6.25	6.32	6.34	6.36

Note: Spot exchange rate as of day before publishing. The left of the currency pair is the denominator of the exchange rate. Forecasts for end of period

Source: BofA Merrill Lynch Global Research

Methodology: US High Quality & Dividend Screen

We list a screen of preferred securities that meet specified selection criteria and have relatively high yields for their credit rating and industry sector. The US High Quality & Dividend Yield Screen is not a recommended list.

Screening criteria

We combined our two secular themes through the following criteria. In our view, these screening factors were likely to uncover higher-quality companies that offered relatively secure dividend yield. The stocks are selected from the S&P 500.

- S&P Common Stock Rank of A+, A, or A-. The S&P Common Stock Rankings are our main measure of quality. These rankings are based primarily on the growth and stability of earnings and dividends over a 10-year period.
- Return on Equity (ROE) greater than the average S&P 500 ROE.
- Debt/Equity lower than the S&P 500.
- Dividend yield greater than the S&P 500.
- BofA Merrill Lynch Research Investment Opinion indicates Buy or Neutral as well as the likelihood that the dividend will remain the same or be increased (ie, a dividend rating of "7").
- The ratio of the last 12 months' free cash flow to dividends must be greater than 1.0.

Methodology: International Low Volatility & Dividend Yield Screen

We list a screen of preferred securities that meet specified selection criteria and have high yields relative to their index. The International Low Volatility & Dividend Yield Screen is not a recommended list.

This monthly screen selects low volatility and high dividend yield stocks from the universe of non-US stocks that have ordinary shares or ADRs that trade on the NYSE or NASDAQ, are covered by BofA Merrill Lynch Global Research, and are constituent members of the MSCI AC World ex-USA Index. The screen uses the following criteria to uncover low volatility companies that offer relatively secure dividend yield.

- BofAML Investment Rating indicates Buy or Neutral.
- BofAML Volatility Risk Rating is A-low or B-medium.
- BofAML Income Rating is 7, which indicates the dividend is expected to remain the same or be increased.
- The dividend yield is greater than the MSCI AC World ex-USA index.
- The debt/equity ratio is less than the MSCI AC World ex-USA index.
- The 5-year annualized dividend growth rate is $\geq 0\%$.

Footnote key

- /#/* One or more analysts responsible for covering the securities in this report owns such securities.
- /b/* MLPF&S or one of its affiliates acts as a market maker for the equity securities recommended in the report.
- /g/* MLPF&S or an affiliate was a manager of a public offering of securities of this company within the last 12 months.
- /i/* The company is or was, within the last 12 months, an investment banking client of MLPF&S and/or one or more of its affiliates.
- /j/* MLPF&S or an affiliate has received compensation from the company for non-investment banking services or products within the past 12 months.
- /o/* The company is or was, within the last 12 months, a securities business client (non-investment banking) of MLPF&S and/or one or more of its affiliates.
- /p/* The company is or was, within the last 12 months, a non-securities business client of MLPF&S and/or one or more of its affiliates.
- /q/* In the US, retail sales and/or distribution of this report may be made only in states where these securities are exempt from registration or have been qualified for sale.
- /r/* An officer, director or employee of MLPF&S or one of its affiliates is an officer or director of this company.
- /s/* MLPF&S or an affiliate has received compensation for investment banking services from this company within the past 12 months.
- /v/* MLPF&S or an affiliate expects to receive or intends to seek compensation for investment banking services from this company or an affiliate of the company within the next three months.
- /w/* MLPF&S together with its affiliates beneficially owns one percent or more of the common stock of this company. If this report was issued on or after the 10th day of the month, it reflects the ownership position on the last day of the previous month. Reports issued before the 10th day of a month reflect the ownership position at the end of the second month preceding the date of the report.
- /x/* Customers of MLPF&S in the US can receive independent, third-party research on companies covered in this report, at no cost to them, if such research is available. Customers can access this independent research at <http://www.ml.com/independentresearch> or can call 1-800-637-7455 to request a copy of this research.
- /z/* The country in which this company is organized has certain laws or regulations that limit or restrict ownership of the company's shares by nationals of other countries.
- /A/* One of the analysts covering the company is a former employee of the company and, in that capacity, received compensation from the company within the past 12 months.
- /B/* MLPF&S or one of its affiliates is willing to sell to, or buy from, clients the common equity of the company on a principal basis.
- /C/* Merrill Lynch is affiliated with an NYSE specialist organization that specializes in one or more securities issued by the subject companies. This affiliated NYSE specialist organization makes a market in, and may maintain a long or short position in or be on the opposite side of orders executed on the Floor of the NYSE in connection with one or more of the securities issued by these companies.
- /N/* The company is a corporate broking client of Merrill Lynch International in the United Kingdom.
- /O/* MLPF&S or one of its affiliates has a significant financial interest in the fixed income instruments of the issuer. If this report was issued on or after the 10th day of a month, it reflects a significant financial interest on the last day of the previous month. Reports issued before the 10th day of a month reflect a significant financial interest at the end of the second month preceding the date of the report.

Link to Definitions

Macro

Click [here](#) for definitions of commonly used terms.

Important Disclosures

FUNDAMENTAL EQUITY OPINION KEY: Opinions include a Volatility Risk Rating, an Investment Rating and an Income Rating. **VOLATILITY RISK RATINGS**, indicators of potential price fluctuation, are: A - Low, B - Medium and C - High. **INVESTMENT RATINGS** reflect the analyst's assessment of a stock's: (i) absolute total return potential and (ii) attractiveness for investment relative to other stocks within its *Coverage Cluster* (defined below). There are three investment ratings: 1 - Buy stocks are expected to have a total return of at least 10% and are the most attractive stocks in the coverage cluster; 2 - Neutral stocks are expected to remain flat or increase in value and are less attractive than Buy rated stocks and 3 - Underperform stocks are the least attractive stocks in a coverage cluster. Analysts assign investment ratings considering, among other things, the 0-12 month total return expectation for a stock and the firm's guidelines for ratings dispersions (shown in the table below). The current price objective for a stock should be referenced to better understand the total return expectation at any given time. The price objective reflects the analyst's view of the potential price appreciation (depreciation).

Investment rating	Total return expectation (within 12-month period of date of initial rating)	Ratings dispersion guidelines for coverage cluster*
Buy	≥ 10%	≤ 70%
Neutral	≥ 0%	≤ 30%
Underperform	N/A	≥ 20%

* Ratings dispersions may vary from time to time where BofA Merrill Lynch Research believes it better reflects the investment prospects of stocks in a Coverage Cluster.

INCOME RATINGS, indicators of potential cash dividends, are: 7 - same/higher (dividend considered to be secure), 8 - same/lower (dividend not considered to be secure) and 9 - pays no cash dividend. *Coverage Cluster* is comprised of stocks covered by a single analyst or two or more analysts sharing a common industry, sector, region or other classification(s). A stock's coverage cluster is included in the most recent BofA Merrill Lynch Comment referencing the stock.

BofA Merrill Lynch Research personnel (including the analyst(s) responsible for this report) receive compensation based upon, among other factors, the overall profitability of Bank of America Corporation, including profits derived from investment banking revenues.

Other Important Disclosures

Officers of MLPF&S or one or more of its affiliates (other than research analysts) may have a financial interest in securities of the issuer(s) or in related investments.

BofA Merrill Lynch Global Research policies relating to conflicts of interest are described at <http://www.ml.com/media/43347.pdf>.

"BofA Merrill Lynch" includes Merrill Lynch, Pierce, Fenner & Smith Incorporated ("MLPF&S") and its affiliates. Investors should contact their BofA Merrill Lynch representative or Merrill Lynch Global Wealth Management financial advisor if they have questions concerning this report.

"BofA Merrill Lynch" and "Merrill Lynch" are each global brands for BofA Merrill Lynch Global Research.

Information relating to Non-US affiliates of BofA Merrill Lynch and Distribution of Affiliate Research Reports:

MLPF&S distributes, or may in the future distribute, research reports of the following non-US affiliates in the US (short name: legal name): Merrill Lynch (France): Merrill Lynch Capital Markets (France) SAS; Merrill Lynch (Frankfurt): Merrill Lynch International Bank Ltd., Frankfurt Branch; Merrill Lynch (South Africa): Merrill Lynch South Africa (Pty) Ltd.; Merrill Lynch (Milan): Merrill Lynch International Bank Limited; MLI (UK): Merrill Lynch International; Merrill Lynch (Australia): Merrill Lynch Equities (Australia) Limited; Merrill Lynch (Hong Kong): Merrill Lynch (Asia Pacific) Limited; Merrill Lynch (Singapore): Merrill Lynch (Singapore) Pte Ltd.; Merrill Lynch (Canada): Merrill Lynch Canada Inc; Merrill Lynch (Mexico): Merrill Lynch Mexico, SA de CV, Casa de Bolsa; Merrill Lynch (Argentina): Merrill Lynch Argentina SA; Merrill Lynch (Japan): Merrill Lynch Japan Securities Co., Ltd.; Merrill Lynch (Seoul): Merrill Lynch International Incorporated (Seoul Branch); Merrill Lynch (Taiwan): Merrill Lynch Securities (Taiwan) Ltd.; DSP Merrill Lynch (India): DSP Merrill Lynch Limited; PT Merrill Lynch (Indonesia): PT Merrill Lynch Indonesia; Merrill Lynch (Israel): Merrill Lynch Israel Limited; Merrill Lynch (Russia): OOO Merrill Lynch Securities, Moscow; Merrill Lynch (Turkey I.B.): Merrill Lynch Yatirim Bank A.S.; Merrill Lynch (Turkey Broker): Merrill Lynch Menkul Değerler A.Ş.; Merrill Lynch (Dubai): Merrill Lynch International, Dubai Branch; MLPF&S (Zurich rep. office): MLPF&S Incorporated Zurich representative office; Merrill Lynch (Spain): Merrill Lynch Capital Markets Espana, S.A.S.V.; Merrill Lynch (Brazil): Bank of America Merrill Lynch Banco Multiplo S.A.; Merrill Lynch KSA Company, Merrill Lynch Kingdom of Saudi Arabia Company.

This research report has been approved for publication and is distributed in the United Kingdom to professional clients and eligible counterparties (as each is defined in the rules of the Financial Conduct Authority and the Prudential Regulation Authority) by Merrill Lynch International and Bank of America Merrill Lynch International Limited, which are authorized by the Prudential Regulation Authority and regulated by the Financial Conduct Authority and the Prudential Regulation Authority, and is distributed in the United Kingdom to retail clients (as defined in the rules of the Financial Conduct Authority and the Prudential Regulation Authority) by Merrill Lynch International Bank Limited, London Branch, which is authorised by the Central Bank of Ireland and subject to limited regulation by the Financial Conduct Authority and Prudential Regulation Authority - details about the extent of our regulation by the Financial Conduct Authority and Prudential Regulation Authority are available from us on request; has been considered and distributed in Japan by Merrill Lynch Japan Securities Co., Ltd., a registered securities dealer under the Financial Instruments and Exchange Act in Japan; is distributed in Hong Kong by Merrill Lynch (Asia Pacific) Limited, which is regulated by the Hong Kong SFC and the Hong Kong Monetary Authority (note that Hong Kong recipients of this research report should contact Merrill Lynch (Asia Pacific) Limited in respect of any matters relating to dealing in securities or provision of specific advice on securities); is issued and distributed in Taiwan by Merrill Lynch Securities (Taiwan) Ltd.; is issued and distributed in India by DSP Merrill Lynch Limited; and is issued and distributed in Singapore to institutional investors and/or accredited investors (each as defined under the Financial Advisers Regulations) by Merrill Lynch International Bank Limited (Merchant Bank) and Merrill Lynch (Singapore) Pte Ltd. (Company Registration No.'s F 06872E and 198602883D respectively). Merrill Lynch International Bank Limited (Merchant Bank) and Merrill Lynch (Singapore) Pte Ltd. are regulated by the Monetary Authority of Singapore. Bank of America N.A., Australian Branch (ARBN 064 874 531), AFS License 412901 (BANA Australia) and Merrill Lynch Equities (Australia) Limited (ABN 65 006 276 795), AFS License 235132 (MLEA) distributes this report in Australia only to 'Wholesale' clients as defined by s.761G of the Corporations Act 2001. With the exception of BANA Australia, neither MLEA nor any of its affiliates involved in preparing this research report is an Authorised Deposit-Taking Institution under the Banking Act 1959 nor regulated by the Australian Prudential Regulation Authority. No approval is required for publication or distribution of this report in Brazil and its local distribution is made by Bank of America Merrill Lynch Banco Multiplo S.A. in accordance with applicable regulations. Merrill Lynch (Dubai) is authorized and regulated by the Dubai Financial Services Authority (DFSA). Research reports prepared and issued by Merrill Lynch (Dubai) are prepared and issued in accordance with the requirements of the DFSA conduct of business rules.

Merrill Lynch (Frankfurt) distributes this report in Germany. Merrill Lynch (Frankfurt) is regulated by BaFin.

11 March 2014

This research report has been prepared and issued by MLPF&S and/or one or more of its non-US affiliates. MLPF&S is the distributor of this research report in the US and accepts full responsibility for research reports of its non-US affiliates distributed to MLPF&S clients in the US. Any US person receiving this research report and wishing to effect any transaction in any security discussed in the report should do so through MLPF&S and not such foreign affiliates.

General Investment Related Disclosures:

Taiwan Readers: Neither the information nor any opinion expressed herein constitutes an offer or a solicitation of an offer to transact in any securities or other financial instrument. No part of this report may be used or reproduced or quoted in any manner whatsoever in Taiwan by the press or any other person without the express written consent of BofA Merrill Lynch.

This research report provides general information only. Neither the information nor any opinion expressed constitutes an offer or an invitation to make an offer, to buy or sell any securities or other financial instrument or any derivative related to such securities or instruments (e.g., options, futures, warrants, and contracts for differences). This report is not intended to provide personal investment advice and it does not take into account the specific investment objectives, financial situation and the particular needs of any specific person. Investors should seek financial advice regarding the appropriateness of investing in financial instruments and implementing investment strategies discussed or recommended in this report and should understand that statements regarding future prospects may not be realized. Any decision to purchase or subscribe for securities in any offering must be based solely on existing public information on such security or the information in the prospectus or other offering document issued in connection with such offering, and not on this report.

Securities and other financial instruments discussed in this report, or recommended, offered or sold by Merrill Lynch, are not insured by the Federal Deposit Insurance Corporation and are not deposits or other obligations of any insured depository institution (including, Bank of America, N.A.). Investments in general and, derivatives, in particular, involve numerous risks, including, among others, market risk, counterparty default risk and liquidity risk. No security, financial instrument or derivative is suitable for all investors. In some cases, securities and other financial instruments may be difficult to value or sell and reliable information about the value or risks related to the security or financial instrument may be difficult to obtain. Investors should note that income from such securities and other financial instruments, if any, may fluctuate and that price or value of such securities and instruments may rise or fall and, in some cases, investors may lose their entire principal investment. Past performance is not necessarily a guide to future performance. Levels and basis for taxation may change.

This report may contain a short-term trading idea or recommendation, which highlights a specific near-term catalyst or event impacting the company or the market that is anticipated to have a short-term price impact on the equity securities of the company. Short-term trading ideas and recommendations are different from and do not affect a stock's fundamental equity rating, which reflects both a longer term total return expectation and attractiveness for investment relative to other stocks within its Coverage Cluster. Short-term trading ideas and recommendations may be more or less positive than a stock's fundamental equity rating.

BofA Merrill Lynch is aware that the implementation of the ideas expressed in this report may depend upon an investor's ability to "short" securities or other financial instruments and that such action may be limited by regulations prohibiting or restricting "shortselling" in many jurisdictions. Investors are urged to seek advice regarding the applicability of such regulations prior to executing any short idea contained in this report.

Foreign currency rates of exchange may adversely affect the value, price or income of any security or financial instrument mentioned in this report. Investors in such securities and instruments, including ADRs, effectively assume currency risk.

UK Readers: The protections provided by the U.K. regulatory regime, including the Financial Services Scheme, do not apply in general to business coordinated by BofA Merrill Lynch entities located outside of the United Kingdom. BofA Merrill Lynch Global Research policies relating to conflicts of interest are described at <http://www.ml.com/media/43347.pdf>.

Officers of MLPF&S or one or more of its affiliates (other than research analysts) may have a financial interest in securities of the issuer(s) or in related investments.

MLPF&S or one of its affiliates is a regular issuer of traded financial instruments linked to securities that may have been recommended in this report. MLPF&S or one of its affiliates may, at any time, hold a trading position (long or short) in the securities and financial instruments discussed in this report.

BofA Merrill Lynch, through business units other than BofA Merrill Lynch Global Research, may have issued and may in the future issue trading ideas or recommendations that are inconsistent with, and reach different conclusions from, the information presented in this report. Such ideas or recommendations reflect the different time frames, assumptions, views and analytical methods of the persons who prepared them, and BofA Merrill Lynch is under no obligation to ensure that such other trading ideas or recommendations are brought to the attention of any recipient of this report.

In the event that the recipient received this report pursuant to a contract between the recipient and MLPF&S for the provision of research services for a separate fee, and in connection therewith MLPF&S may be deemed to be acting as an investment adviser, such status relates, if at all, solely to the person with whom MLPF&S has contracted directly and does not extend beyond the delivery of this report (unless otherwise agreed specifically in writing by MLPF&S). MLPF&S is and continues to act solely as a broker-dealer in connection with the execution of any transactions, including transactions in any securities mentioned in this report.

Copyright and General Information regarding Research Reports:

Copyright 2014 Merrill Lynch, Pierce, Fenner & Smith Incorporated. All rights reserved. iQmethod, iQmethod 2.0, iQprofile, iQtoolkit, iQworks are service marks of Bank of America Corporation. iQanalytics®, iQcustom®, iQdatabase® are registered service marks of Bank of America Corporation. This research report is prepared for the use of BofA Merrill Lynch clients and may not be redistributed, retransmitted or disclosed, in whole or in part, or in any form or manner, without the express written consent of BofA Merrill Lynch. BofA Merrill Lynch Global Research reports are distributed simultaneously to internal and client websites and other portals by BofA Merrill Lynch and are not publicly-available materials. Any unauthorized use or disclosure is prohibited. Receipt and review of this research report constitutes your agreement not to redistribute, retransmit, or disclose to others the contents, opinions, conclusion, or information contained in this report (including any investment recommendations, estimates or price targets) without first obtaining expressed permission from an authorized officer of BofA Merrill Lynch.

Materials prepared by BofA Merrill Lynch Global Research personnel are based on public information. Facts and views presented in this material have not been reviewed by, and may not reflect information known to, professionals in other business areas of BofA Merrill Lynch, including investment banking personnel. BofA Merrill Lynch has established information barriers between BofA Merrill Lynch Global Research and certain business groups. As a result, BofA Merrill Lynch does not disclose certain client relationships with, or compensation received from, such companies in research reports. To the extent this report discusses any legal proceeding or issues, it has not been prepared as nor is it intended to express any legal conclusion, opinion or advice. Investors should consult their own legal advisers as to issues of law relating to the subject matter of this report. BofA Merrill Lynch Global Research personnel's knowledge of legal proceedings in which any BofA Merrill Lynch entity and/or its directors, officers and employees may be plaintiffs, defendants, co-defendants or co-plaintiffs with or involving companies mentioned in this report is based on public information. Facts and views presented in this material that relate to any such proceedings have not been reviewed by, discussed with, and may not reflect information known to, professionals in other business areas of BofA Merrill Lynch in connection with the legal proceedings or matters relevant to such proceedings.

This report has been prepared independently of any issuer of securities mentioned herein and not in connection with any proposed offering of securities or as agent of any issuer of any securities. None of MLPF&S, any of its affiliates or their research analysts has any authority whatsoever to make any representation or

11 March 2014

warranty on behalf of the issuer(s). BofA Merrill Lynch Global Research policy prohibits research personnel from disclosing a recommendation, investment rating, or investment thesis for review by an issuer prior to the publication of a research report containing such rating, recommendation or investment thesis.

Any information relating to the tax status of financial instruments discussed herein is not intended to provide tax advice or to be used by anyone to provide tax advice. Investors are urged to seek tax advice based on their particular circumstances from an independent tax professional.

The information herein (other than disclosure information relating to BofA Merrill Lynch and its affiliates) was obtained from various sources and we do not guarantee its accuracy. This report may contain links to third-party websites. BofA Merrill Lynch is not responsible for the content of any third-party website or any linked content contained in a third-party website. Content contained on such third-party websites is not part of this report and is not incorporated by reference into this report. The inclusion of a link in this report does not imply any endorsement by or any affiliation with BofA Merrill Lynch. Access to any third-party website is at your own risk, and you should always review the terms and privacy policies at third-party websites before submitting any personal information to them. BofA Merrill Lynch is not responsible for such terms and privacy policies and expressly disclaims any liability for them.

Certain outstanding reports may contain discussions and/or investment opinions relating to securities, financial instruments and/or issuers that are no longer current. Always refer to the most recent research report relating to a company or issuer prior to making an investment decision.

In some cases, a company or issuer may be classified as Restricted or may be Under Review or Extended Review. In each case, investors should consider any investment opinion relating to such company or issuer (or its security and/or financial instruments) to be suspended or withdrawn and should not rely on the analyses and investment opinion(s) pertaining to such issuer (or its securities and/or financial instruments) nor should the analyses or opinion(s) be considered a solicitation of any kind. Sales persons and financial advisors affiliated with MLPF&S or any of its affiliates may not solicit purchases of securities or financial instruments that are Restricted or Under Review and may only solicit securities under Extended Review in accordance with firm policies.

Neither BofA Merrill Lynch nor any officer or employee of BofA Merrill Lynch accepts any liability whatsoever for any direct, indirect or consequential damages or losses arising from any use of this report or its contents.

11 March 2014

Team Page

Research Investment Committee (RIC)

Alberto Ades

GEM FI/FX Strategy, Economist
MLPF&S

John Bilton, CFA >>

European Investment Strategist
MLI (UK)

Francisco Blanch

Commodity & Deriv Strategist
MLPF&S

Jill Carey

Equity Strategist
MLPF&S

Michael Contopoulos

HY Credit Strategist
MLPF&S

Steven G. DeSanctis, CFA

Small-Cap Strategist
MLPF&S

Philip Fischer

Municipal Research Strategist
MLPF&S

Christina Giannini, CFA

Small-Cap Strategist
MLPF&S

Ethan S. Harris

Global Economist
MLPF&S

Michael Hartnett

Chief Investment Strategist
MLPF&S

Naoki Kamiyama, CFA >>

Equity Strategist
Merrill Lynch (Japan)

Ajay Singh Kapur, CFA

Equity Strategist
Merrill Lynch (Hong Kong)

Martin Mauro

Fixed Income Strategist
MLPF&S

Hans Mikkelsen

Credit Strategist
MLPF&S

Priya Misra

Rates Strategist
MLPF&S

Ralf Preusser, CFA

Rates Strategist
MLI (UK)

Kristen Pulley, CFA

Portfolio Strategist
MLPF&S

Evan Richardson

Fixed Income Strategist
MLPF&S

Cheryl Rowan

Portfolio Strategist
MLPF&S

Savita Subramanian

Equity & Quant Strategist
MLPF&S

Stephen Suttmeier, CFA, CMT

Technical Research Analyst
MLPF&S

Dan Suzuki, CFA

Equity Strategist
MLPF&S

Matthew Trapp, CFA

Investment Strategist
MLPF&S

Nigel Tupper >>

Strategist
Merrill Lynch (Hong Kong)

Mark Ulrich

Portfolio Strategist
MLPF&S

David Woo

FX and Rates Strategist
MLPF&S

John Wraith

Rates Strategist
MLI (UK)

>> Employed by a non-US affiliate of MLPF&S and is not registered/qualified as a research analyst under the FINRA rules. Refer to "Other Important Disclosures" for information on certain BofA Merrill Lynch entities that take responsibility for this report in particular jurisdictions.